

## **Inflation-Hedging Properties of Real Assets and Implications for Asset-Liability Management Decisions**

**Noël Amenc**

Professor of Finance at EDHEC Business School  
Director of EDHEC Risk and Asset Management Research Center

**Lionel Martellini\***

Professor of Finance at EDHEC Business School  
Scientific Director of EDHEC Risk and Asset Management Research Center

**Volker Ziemann**

Senior Research Engineer  
EDHEC Risk and Asset Management Research Center

### **Abstract**

This paper presents an empirical analysis of the benefits of alternative forms of investment strategies from an asset-liability management perspective. Using a vector error correction model (VECM) that explicitly distinguishes between short-term and long-term dynamics in the joint distribution of asset returns and inflation, we identify the presence of long-term cointegration relationships between the return on a typical pension fund liabilities and the return of various (traditional and) alternative asset classes. Our results suggest that real estate and commodities have particularly attractive inflation hedging properties over long-horizons, which justify their introduction in pension funds' liability-matching portfolios. We show that novel liability-hedging investment solutions, including commodities and real estate in addition to inflation-linked securities, can be designed so as to decrease the cost of inflation insurance for long-horizon investors. These solutions are shown to achieve satisfactory levels of inflation hedging over the long-term at a lower cost compared to a solution solely based on TIPS or inflation swaps. Overall our results suggest that alternatives are very useful ingredients for institutional investors facing inflation-related liability constraints.

---

\*Lionel Martellini is the author for correspondence. He can be reached at the following address: Edhec Risk and Asset Management Research Center, 400 Promenade des Anglais, BP 3116, 06202 Nice Cedex 3, France; email: lionel.martellini@edhec.edu. We acknowledge financial support from Morgan Stanley Investment Management, the sponsor of the Research Chair in "Financial Engineering and Global Alternative Portfolios for Institutional Investors" at EDHEC Risk and Asset Management Research Center.

# 1 Introduction

A recent surge in worldwide inflation has increased the need for investors to hedge against unexpected changes in price levels. In the most recent forecasts, global consumer price index (CPI) inflation has been revised up more than a percentage point, to 5.0%, for calendar 2008, and by 0.7 percentage points, to 3.7%, in 2009, a trend which is likely to continue for the foreseeable future despite the current crisis, given the long-term increased demand pressure on food and energy resources. The CPI inflation peak has been forecasted to be 4.1% in the euro area and 5.5% in the US, and the direct impact of higher food and energy raw material costs is estimated to account for 2.5 percentage points and 3 percentage points, respectively, of these rates.<sup>1</sup> Inflation acceleration in emerging market countries will likely be larger than what is seen in developed countries, reflecting the much greater importance of food in their economies and their generally stronger rates of growth. As a result of these trends, inflation hedging has become a concern of critical importance not only for private investors, who consider inflation as a direct threat with respect to the protection of their purchasing power, but also, and perhaps more importantly, for pension funds who face pension payments that are indexed (conditional or full indexation) with respect to consumer price or wage level indexes.

This focus on inflation hedging is consistent with the heightened focus on liability-risk management that has emerged as a consequence of the 2000-2003 pension crisis. A number of so-called “liability-driven investment” (LDI) techniques have been promoted over the past few years by a number of investment banks and asset management firms, which advocate the design of a customized liability-hedging portfolio (LHP), the sole purpose of which is to hedge away as effectively as possible the impact of unexpected changes in risk factors affecting liability values, and most notably interest rate and inflation risks. This LHP complements the traditional performance-seeking portfolio (PSP), which composition is not impacted by the presence of liabilities. Within the aforementioned LDI paradigm, a variety of cash instruments (Treasury inflation protected securities, or TIPS) as well as dedicated OTC derivatives (such as inflation swaps) are typically used to tailor customized inflation exposures that are suited to each particular institutional investor liability profile. One outstanding problem, however, is that such solutions generate very modest performance. In fact, real returns on inflation-protected securities, negatively impacted by the presence of a significant inflation risk premium, are typically very low. In other words, while these solutions offer very significant risk management benefits, the lack of performance make them rather costly options for pension funds and their sponsor companies. Beside, the capacity of the inflation-linked securities market is not sufficient to meet the collective demand of institutional and private investors, while the OTC inflation derivatives market suffers from a perceived increase in counterparty risk.

In this context, it has been argued that some other asset classes, such as stocks and

---

<sup>1</sup>See Barclay Capital Global Outlook 2008, Implications for financial markets.

nominal bonds, but also real estate or commodities, could provide useful, albeit imperfect, inflation protection at a lower cost compared to investing in TIPS. On the one hand, equity investments appear as relatively poor inflation hedging vehicles from a short-term perspective. Empirical evidence indeed suggests that there is in fact a negative relationship between expected stock returns and expected inflation (see Fama and Schwert (1977), Gultekin (1983) and Kaul (1987) among others), which is consistent with the intuition that higher inflation leads to lower economic activity, thus depressing stock returns (e.g. Fama (1981)).<sup>2</sup> On the other hand, higher future inflation leads to higher dividends and thus higher returns on stocks (Campbell and Shiller (1988)), and thus equity investments should offer significant inflation protection over longer horizons, a fact that has been confirmed by a number of recent empirical academic studies (Boudoukh and Richardson (1993) or Schotman and Schweitzer (2000)). This property is particularly appealing for long-term investors such as pension funds, who need to match increases in price level at the horizon, but not necessarily on a monthly basis. Obviously, different kinds of stocks offer contrasted inflation-hedging benefits, and it is in fact possible to select stocks or sectors on the basis of their ability to hedge against inflation (hedging demand), as opposed to selecting them as a function of their outperformance potential (speculative demand). For example, utilities and infrastructures companies typically have revenues that are heavily correlated with inflation, and as a result they tend to provide better-than-average inflation protection. Similar inflation hedging properties are expected for bond returns. Indeed, bond yields may be decomposed into a real yield and an expected inflation components. Since expected and realized inflation move together on the long-term (see Schotman and Schweitzer (2000)), we expect a positive long-term correlation between bond returns and changes in inflation. In the short-term, however, expected inflation may deviate from the actual realized inflation, leading to low or negative correlations. There again, an investor willing and able to relax short-term constraints to focus on long-term inflation hedging properties will find that investing in nominal bonds can provide a cost-efficient alternative to (or complement to) investing in inflation-linked securities.

Moving beyond traditional investment vehicles such as stocks and bonds, recent academic research has also suggested that alternative forms of investments offer attractive inflation-hedging benefits. Commodity prices, in particular, have been found to be leading indicators of inflation in that they are quick to respond to economy-wide shocks

---

<sup>2</sup>This finding is also consistent with the so-called "Fed model", which is used by many investment professionals to generate signals about the relative attractiveness of stock prices relative to bond prices. The model assumes that bonds and equities compete for space in investment portfolios; if bond yields increase, then stock yields must also rise in order to remain competitive. Thus, the Fed model relates the yield on stocks (as measured by the ratio of dividends or earnings to stock prices) to the yield on Treasury bonds and to the relative risk premium of stocks versus bonds. In the long-run, the Fed model posits that the actual yield on stocks will revert to a normal yield level given by the bond yield plus the risk premium. Historically, the rate of inflation has been a major influence on nominal bond yields. Therefore, the Fed model implies that stock yields and inflation must be highly correlated. Campbell and Vuolteenaho (2004) review stock market performance between 1927 and 2002, examining the impact of risk premiums and inflation on stock yields and find strong support for the Fed model.

to demand. Commodity prices generally are set in highly competitive auction markets and consequently tend to be more flexible than prices overall. Beside, recent inflation is heavily driven by the increase in commodity prices, in particular in the domain of agriculture, minerals and energy. Consistent with these theoretical arguments, a recent study by Gorton and Rouwenhorst (2006) find that, over the 1959-2004 period, commodity futures were positively correlated with inflation, unexpected inflation, and changes in expected inflation. They also find that inflation correlations tend to increase with the holding period and are larger at return intervals of 1 and 5 years than at the monthly or quarterly frequency. In the same spirit, it has also been found that commercial and residential real estate provide at least a partial hedge against inflation, which implies that portfolios that include real estate allow for enhanced inflation hedging benefits (see Fama and Schwert (1977), Hartzell et al. (1987) or Rubens et al. (1989)). This effect seems to be particularly significant over long-horizons. Hence, Anari and Kolari (2002) examine the long-run impact of inflation on homeowner equity by investigating the relationship between house prices and the prices of non housing goods and services, rather than return series and inflation rates, and infer that house prices are a stable inflation hedge in the long-run. When it comes to securitized forms of real estate investment, the situation is less clear, even though there is evidence of a long-term connection that suggest that REITs could neutralize part of the inflation risk in the long run (Westerheide (2006)).

In order to assess the inflation hedging potential of the various asset classes within a unified framework, we follow the literature on predictability of asset returns (see e.g. Kandel and Stambaugh (1996), Campbell and Viceira (1999) and Barberis (2000)). As such, our analysis is closely related to Hoevenaars et al. (2008) who construct optimal mean-variance portfolios with respect to inflation-driven liabilities based on model-implied forward looking variances and expected returns. Their basic finding is that alternative asset classes add value to the investor's portfolio and command significant positive allocation in the optimal mean-variance portfolio. The authors further stress that the allocations in alternative asset classes are higher within the optimal asset-liability portfolio as opposed to optimal asset-only portfolio. In what follows, we extend this existing literature in several directions. First, we note that modeling returns with a vector auto-regressive (VAR) model on log-returns, as was mostly done in previous research on the subject, omits any information on price dependencies and long-term equilibria to purely focus on short-term effects in return series. In order to address this shortcoming of the VAR model, we include cointegration relationships in the model and assess sensitivities of model-implied dynamics with respect to these additional factors that capture price dependencies in addition to return dependencies. The resulting error correction form of the vector-autoregressive model (VECM), or cointegrated VAR model, has the striking advantage, as compared to the standard VAR representation, that it explicitly distinguishes between short-term and long-term dynamics in the joint distribution of asset returns and inflation. While error correction form of the vector-autoregressive model have been extensively used in the macroeconomic literature in order to distinguish between trends and business cycles and thus between stationary

and non-stationary components in consumption and wealth dynamics (see e.g. Lettau and Ludvigson (2004) or Beaudry and Portier (2006) for recent studies), this approach is relatively new in the finance literature. It has been used in modeling price and return dependencies of financial securities (e.g. Blanco et al. (2005) or Durre and Giot (2007)) and, more recently, in inflation hedging contexts (Westerheide (2006) or Hoesli et al. (2007)).

To the best of our knowledge, our paper is the first to provide a comprehensive VECM model for the formal analysis of inflation-hedging properties of various traditional and alternative classes. We derive econometric forecasts for model-implied volatilities and correlations, and we find that the results strongly deviate from what is obtained with a standard VAR model (see Sections 3 and 4). Using the VECM model that explicitly distinguishes between short-term and long-term dynamics in the joint distribution of asset returns and inflation, we identify the presence of long-term cointegration relationships between the return on a typical pension fund liabilities and the return of various (traditional and) alternative asset classes. Our results suggest that real estate and commodities have particularly attractive inflation hedging properties over long-horizons. Subsequently, we use the VECM fitted parameters in order to perform a simulation-based analysis of the impact on ALM risk budgets of various portfolio allocations. More precisely, the paper suggests a structural form of the model that incorporates i.i.d. innovations, which allows for the generation of a stochastic Monte Carlo analysis in a straightforward manner. The afore-mentioned findings suggest that novel long-term liability-hedging investment solutions can be designed so as to decrease the cost of inflation insurance from the investor's perspective. In particular, it is possible to construct enhanced versions of inflation-hedging portfolios including inflation-linked securities, but also, commodities and real estate, so as to achieve satisfactory levels of inflation hedging over the long-term at a lower cost compared to a solution solely based on inflation swaps. The intuition behind our results is rather straightforward. The increased expected return potential generated through the introduction of commodities and real estate in addition to TIPS in the LHP allows for a reduced global allocation to the PSP while meeting the global performance expectations, which in turn allows for better risk management properties.

The rest of this paper is organized as follows. In section 2, we present the econometric framework and motivate the introduction on an error correction extension of the standard VAR model. In Section 3 we describe the data base as well as preliminary statistical tests that are used for model selection purposes. In section 4, we assess the inflation hedging potential of various traditional and alternative asset classes, and construct different versions of enhanced liability-hedging portfolios that contain real estate and commodities in addition to TIPS. Section 5 analyzes the impact in terms of risk budget improvements of the introduction of such enhanced liability hedging portfolios. Section 6 concludes the paper.

## 2 Modelling return and inflation dynamics

The first key challenge that needs to be met for the analysis of the benefits of alternative investment strategies from an asset-liability perspective is the design of an appropriate econometric model for the joint distribution of asset returns and inflation. As recalled in the introduction, the bulk of literature on stock return predictability and return dynamics modeling (e.g. Campbell and Shiller (1988)) has relied on vector-autoregressive (VAR) models. The calibration of a VAR model is generally performed on asset *return* series corresponding to asset classes of interest and a set of potentially predictive economic variables that are introduced in order to enhance the explanatory power of the model. In the context of VAR models, the choice of using *return* series as opposed to *price* series is either non-motivated, or motivated by the stylized fact that return series are stationary while asset price series are not. The important consequence of stationarity follows from the *Wold's Decomposition Theorem* that states that stationary processes can be expressed as a moving average process (cf. Hamilton (1994, pp. 108)), which in turn allows for the derivation of analytical expressions for shock responses, expected return and forward looking variances. Secondly, non-stationarity leads to unstable, explosive and unbounded forward-looking variances and covariances, which makes the model non-tractable and non-suited for portfolio selection purposes (see Lütkepohl (1993)). As a consequence, most econometric financial applications are based on return series or log-return series that are proven to be stationary, while price series tend to be integrated of order 1 at least. More formally, a process  $y_t$  is integrated of order  $d$  (written:  $y_t \sim I(d)$ ) if  $\Delta^d y_t$  is stationary while  $\Delta^{d-1}$  is not stationary (see Lütkepohl (1993) for example).

One outstanding question, however, is whether taking first differences and removing information related to price dependencies is too restrictive. The main concept behind the *cointegration* framework, introduced by Engle and Granger (1987), is precisely that integrated variables may exhibit common trends that account for the non-stationary pattern in the system. Thus, linear combinations of non-stationary variables may turn out to be stationary. Formally, a process is said to be cointegrated of order  $(d, i)$  with  $d, i > 0$ , or  $y_t \sim CI(d, i)$ , if  $y_t$  is integrated of order  $d$  ( $y_t \sim I(d)$ ) and there exists a linear combination  $\beta' y_t$  such that  $\beta' y_t \sim I(d - i)$ . In particular, if price series are  $I(1)$ , we are interested in linear combinations of these price series that are  $I(0)$  and thus stationary. The next section introduces the error correction version of the VAR model, known as VECM model, which incorporates both leveled and differences series. In other words, the model uses systematic relationships of both cross-sectional returns dynamics and cross-sectional price dynamics.

### 2.1 The econometric model

Let us first consider the standard vector-autoregressive (VAR) model of order  $p$ :

$$y_t = c + A_1 y_{t-1} + \dots + A_p y_{t-p} + u_t \quad (1)$$



where  $y_t$  represents a  $n \times 1$  vector of endogenous variables,  $c$  is a constant,  $A_i$  are  $n \times n$  coefficient matrices and  $\varepsilon$  is the innovation process. If the process is stable<sup>3</sup>, it may be rewritten as a finite moving average process:

$$y_t = \sum_{k=0}^t \Phi_k u_{t-k} \quad (2)$$

where  $\Phi_0$  is the identity matrix and the  $\Phi_s$  are recursively given as:

$$\Phi_s = \sum_{j=1}^s \Phi_{s-j} A_j \quad (3)$$

with  $A_j = 0$  for all  $j > p$ .

Moreover, stability implies stationarity, meaning that expected returns, variances and covariances are time-invariant. This is a critical point for financial applications where the econometric model is used for forecasting purposes and for deriving analytical expressions for expected returns, variances and correlations. In the case of non-stationary processes, variances would be unbounded and time-variant which in turn leads to unbounded confidence intervals of the forecasted variables.

In order to infer whether a time series is stationary or not, various so-called *unit root* tests are available. The most commonly used test is the *Augmented Dickey-Fuller* (ADF) test (see e.g. Greene (2003)). If the test of unit roots cannot be rejected for all endogenous variables in  $y$ , the VAR process is integrated or cointegrated. As outlined above, if the variables are  $I(1)$ , writing the VAR model (1) on first-differenced variables generates a stationary process:

$$\Delta y_t = c + \Gamma_1 \Delta y_{t-1} + \dots + \Gamma_p \Delta y_{t-p} + u_t \quad (4)$$

The unfortunate consequence of using the first-differenced variables is that any information regarding price dynamics is lost, which could prove detrimental to the predictive power of the model. For example, in an early economic study on the relationship between log consumption and log income, Davidson et al. (1978) have found that information on the deviation from a long term equilibrium enhances the explanatory power of the predictive model. To account for the presence of long-term relationships in price series, the VAR model can be generalized through the following error correction form (henceforth, VECM):

$$\Delta y_t = c + \alpha z_{t-1} + \Gamma_1 \Delta y_{t-1} + \dots + \Gamma_p \Delta y_{t-p} + u_t \quad (5)$$

where  $z$  represents the deviation from the long term equilibrium. Subsequently, this representation has been used to define the cointegration framework. Indeed, if a long-term equilibrium relationship exists, it implies that  $z$  is a stationary variable. Assuming that

---

<sup>3</sup>A process  $y_t$  is stable if its reverse characteristic polynomial has no roots in or on the unit circle:  $\det(I - A_1 - \dots - A_p z^p) \neq 0 \quad \forall |z| < 1$ .

the long-term equilibrium can be expressed as a linear combination of the endogenous variables, we can rewrite (5) as:

$$\Delta y_t = c + \Pi y_{t-1} + \Gamma_1 \Delta y_{t-1} + \dots + \Gamma_p \Delta y_{t-p} + u_t \quad (6)$$

with the reduced rank matrix  $\Pi = \alpha\beta'$ . Its rank  $r < n$  determines the number of linear independent long-term equilibrium relationships and is also called *cointegration rank*. In other words, there are  $r$  independent linear combinations of the lagged endogenous variables that define the cointegration relationships constituting  $r$  stationary variables  $\beta'y$ . Accordingly,  $\alpha$  and  $\beta$  are  $n \times r$  matrices and  $\beta$  hosts the cointegrating vectors so that  $\beta'y_t$  is stationary and reflects the long term equilibrium relationships of the variables while  $\alpha$  hosts the corresponding adjustment parameters, that is, the parameters that determine the reversion speed to this long-term equilibrium. It is important to note that  $\alpha$  and  $\beta$  are not unique due to the reduced rank of  $\Pi$ . Accordingly, additional restrictions are needed to ensure that  $\alpha$  and  $\beta$  are just identified. A set of restrictions that has been accepted as a standard procedure in the econometric literature is to define the upper part of  $\beta$  as the  $r \times r$  identity matrix. Then, it can be shown that the estimated coefficient matrices are asymptotically unbiased (see e.g. Lütkepohl (1993, pp. 358)). Two particular cases are worth mentioning. First, if  $r=0$ , then there are no linear combinations of the original variables that form a stationary process, and only first-differencing may lead to a stationary system. Secondly, if  $r=n$ ,  $y_t$  has a stable VAR(p) representation.

Note that we specify all entries in  $y$  as the log of the index level values. This is mainly done because economic and financial time series are often shown to have exponential trends. Writing linear regression models such as the VAR or the VECM on the log of these variables is therefore consistent with the economically assumed dynamics since taking the log of exponential process linearizes the processes. Log-returns are also convenient because they directly add up across time-intervals.

## 2.2 Structural model and impulse-response functions

In the context of cointegrated processes, the dynamics of the underlying variables may be separated in short-run and long-run dynamics. Short-run dynamics are driven by the structural responses to lagged innovations captured by  $\Gamma_i$  in (5). The cointegration relationship vector  $\beta$  and the reversion speed vector  $\alpha$  govern the long-run dynamics. More precisely,  $\Pi = \alpha\beta'$  induces instantaneous shocks to the system if it deviates from the long-term equilibrium. As outlined earlier, if the system is cointegrated, cross-sectional responses to shocks may be non-transitory or persistent as the time-series "hang together". This section introduces a modeling approach that uses long-run and short-run restrictions in order to identify the structural shocks of the system. The structural form of the model is characterized by i.i.d. innovations  $\varepsilon_{t,i}$ , as opposed to the correlated original innovation process  $u_{t,i}$ . For this, we search for the transformation matrix  $B$  such that:

$$u_t = B\varepsilon_t \quad (7)$$



From the structural assumption we know that the covariance matrix of the i.i.d innovations  $\varepsilon$  ( $\Sigma_\varepsilon$ ) is diagonal. Without any loss of generality we postulate  $\Sigma_\varepsilon$  to be the identity matrix. Therefore, the original innovation covariance matrix may be written as  $\Sigma_u = \mathbf{B}\mathbf{B}'$ . The transformation matrix  $\mathbf{B}$  hosts  $n \times n$  parameters that need to be identified. Since  $\Sigma_u$  is symmetric, only  $\frac{1}{2}n(n+1)$  independent equations are available from  $\Sigma_u = \mathbf{B}\mathbf{B}'$ . For the parameters to be just identified we need  $\frac{1}{2}n(n-1)$  additional restrictions. One way to do this is to use the Cholesky decomposition. Then, the contemporaneous impact matrix  $\mathbf{B}$  is given as a lower triangular matrix. As a matter of fact, the matrix  $\mathbf{B}$  is not unique and the ordering of the variables determines the dynamics of the structural shocks.

Given the specific context of the VECM and the fact that some shocks are persistent, we follow Breitung et al. (2004) and impose restrictions on short-run dynamics of the shocks as well as on the long-run impact matrix. According to Granger's representation theorem (see Johansen (1995), Theorem 4.2), this matrix is given by (see Vlaar (2004) for details):

$$\Xi = \beta_\perp [\alpha'_\perp (I - \Gamma) \beta_\perp]^{-1} \alpha'_\perp \mathbf{B} \quad (8)$$

with  $\alpha_\perp$  and  $\beta_\perp$  such that:

$$\alpha'_\perp \alpha = \beta'_\perp \beta \stackrel{!}{=} 0 \quad (9)$$

The rank of this matrix is  $n-r$  since  $r$  cointegrating relationships form stationary combinations, meaning that  $r$  shocks have only transitory impacts and disappear in the long-run. As can be seen from (3), the long-run impact matrix of the structural shocks is  $\Xi\mathbf{B}$ . Straightforwardly, this matrix also has reduced rank equal to  $n-r$ . Hence, at most  $r$  columns of  $\Xi\mathbf{B}$  can be zero columns since only at most  $r$  structural innovation can have transitory effects and at least  $n-r$  shocks must have persistent effects to the system. Given its reduced rank, each column of zeros in  $\Xi\mathbf{B}$  accounts for  $n-r$  restrictions. As shown in Gonzalo and Ng (2001), the remaining restrictions split up into  $r(r-1)/2$  restrictions on the transitory shocks ( $\mathbf{B}$ ) and into  $(n-r)((n-r)-1)/2$  additional restrictions on the permanent shocks ( $\Xi\mathbf{B}$ ). We set the identifying restrictions through:

$$\mathbf{R}_{\Xi\mathbf{B}} \mathbf{vec}(\Xi\mathbf{B}) = r_l \quad \text{and} \quad \mathbf{R}_B \mathbf{vec}(\mathbf{B}) = r_s \quad (10)$$

while we restrict  $r_l$  and  $r_s$  to be vectors of zeros. The long-run restrictions may also be written as  $\mathbf{R}_l \mathbf{vec}(\mathbf{B}) = r_l$  with  $\mathbf{R}_l = \mathbf{R}_{\Xi\mathbf{B}}(I_n \otimes \Xi)$ . The matrix  $\mathbf{B}$  can accordingly be estimated by the maximum likelihood method. Following Breitung et al. (2004), the corresponding log-likelihood function is given by:<sup>4</sup>

$$l(\mathbf{B}) = \text{const} - \frac{T}{2} \log |\mathbf{B}|^2 - \frac{T}{2} \text{tr}((\mathbf{B}')^{-1} \mathbf{B}^{-1} \Sigma_u) \quad (11)$$

---

<sup>4</sup>More details on distributional assumptions and asymptotic properties of the estimation method can be found in Lütkepohl (2008).

Once the transformation matrix is identified, we can write the Structural VECM(1) (SVECM(1)) in its reduced form:

$$\Delta y_t = c + \Pi y_{t-1} + \Gamma \Delta y_{t-1} + B\varepsilon_t \quad (12)$$

This representation allows us to conduct structural impulse-response analyzes, that is, to analyze the impact of isolated independent structural shocks  $\varepsilon_t$  as opposed to the correlated innovation process  $u_t$  in the reduced VECM form (5). To illustrate this, we write the model in its level variables form:

$$y_t = c + A_1 y_{t-1} + A_2 y_{t-2} + B\varepsilon_t \quad (13)$$

with:

$$A_1 = I_n + \Gamma + \alpha\beta' \quad \text{and} \quad A_2 = -\Gamma \quad (14)$$

Accordingly, the VAR model structure allows us to write structural impulse-response functions as

$$\Xi_s = \Phi_s B \quad (15)$$

with  $\Phi_s$  as in (3). The elements in  $\Xi_s$  illustrate the impacts of unit structural shocks that occurred at time  $t$  on the endogenous variables at time  $t+s$ . The  $kl$ -th element of  $\Xi_s$ , for instance, depicts the impact of a unit structural shock to variable  $l$  at time  $t$  on variable  $k$  at time  $t+s$ . As a result, this analysis allows us to measure the impact of inflation shocks on the various asset classes through time and to analyze short-run inflation hedging potential, in addition to the long run dynamic analysis captured by the cointegration relations and the long-run dynamics given by  $\Xi_\infty$ . Confidence intervals for impulse-response functions are computed based on the bootstrap procedure described in Brüggemann (2006). In other words, we can assess co- or counter-movements between the inflation index and asset returns, and subsequently analyse horizon dependent inflation hedging capacities for the various asset classes. It is further worth mentioning that the impulse response functions converge towards the long-run impact matrix  $\Xi B$ .

As a direct application of the structural VECM, section 5 uses the i.i.d. innovation process property in order to perform a Monte Carlo analysis based on the fitted model. The generated scenarios will be subsequently exploited in a portfolio construction context.

### 3 Data and model specification

Our empirical analysis focuses on a set of traditional and alternative asset classes. Stock returns are represented by the CRSP value-weighted stock index. Commodities are proxied by the S&P Goldman Sachs Commodity index (GSCI). Real estate investments are represented by the FTSE NAREIT real estate index, which is a value-weighted basket of REITs listed on NYSE, AMEX and NASDAQ. We thus limit the opportunity set to liquid and publicly traded assets. Finally, we add the Lehman Long

US Treasury Index, as well as the one-month Treasury bill rate.<sup>5</sup> Following the evidence from the extensive literature on return predictability (see Stock and Watson (1999) among others), we also add potential predictive economic variables to the set of endogenous variables. We introduce the dividend yield (see e.g. Campbell and Shiller (1988), Hodrick (1992) or Campbell and Viceira (2002)), the credit spread (computed as the difference between Moody's Seasoned Baa Corporate Bond Yield and the 10-Year Treasury Constant Maturity Rate), as well as the term spread (obtained from the difference between the 10-Year Treasury Constant Maturity Rate and the 1-month-T-Bill rate). The dividend yield data is obtained from CRSP and all other economic figures were obtained from The US Federal Reserve Economic Database.<sup>6</sup> Our analysis is based on quarterly returns from Q1 1973 through Q4 2007.

Regarding the liability side, we include an inflation proxy represented by the consumer price index (CPI). As in Hoevenaars et al. (2008), we assume that the fund is in a stationary state as would be the case in a situation where the age cohorts and the built-up pension rights per cohort are constant through time. Under this assumption, and further assuming that liability payments exhibit unconditional inflation-indexation, the return on the liability portfolio can be proxied as the return on a constant maturity zero-coupon TIPS with a maturity equal to the duration of the liability cash-flows.<sup>7</sup> We construct the time-series for such constant maturity zero-coupon TIPS in accordance with the methodology described in Kothari and Shanken (2004), which states that the nominal return on a real bond is given as the sum of a real yield plus realized inflation. The real yield is in turn obtained as the difference of the nominal yield and the sum of expected inflation plus the inflation risk premium. As in Kothari and Shanken (2004), we assume the inflation risk premium to be equal to zero.<sup>8</sup> We simplify the computation of expected inflation by taking it as the 60-months moving average inflation. As a result, we obtain the returns on liabilities as:

$$r_{L,t} = yield_t^{(\tau)} - E_t(\pi) \quad (16)$$

where the upper index  $\tau$  indicates the duration of the liabilities, which we have arbitrarily chosen in what follows to be equal to 20 years.<sup>9</sup> In Appendix A.2, we provide a detailed derivation of the pricing scheme for inflation-indexed liabilities.

---

<sup>5</sup>The series is downloadable from Kenneth French's web site (borrowed from Ibbotson Associates).

<sup>6</sup>See <http://research.stlouisfed.org/fred2>.

<sup>7</sup>Incorporating additional features such as actuarial uncertainty and inflation indexation would not impact the main message of the paper, which focuses on the inflation-hedging properties of real assets.

<sup>8</sup>Note, that Kothari and Shanken (2004) also considered the case of a 50bps per annum inflation premium.

<sup>9</sup>Hoevenaars et al. (2008) use 17 years as the duration of the liability portfolio. To avoid having to rely on interpolation, we rather use observable interest rate series from the FED, which are exclusively available for the maturities 1, 3, 5, 6, 7, 10 and 20 years (see <http://research.stlouisfed.org/fred2>).

### 3.1 Model selection

We begin our empirical analysis with a number of preliminary tests that help us select the appropriate econometric model. Table 1 presents the results of Augmented Dickey-Fuller (ADF) tests for level, differenced and twice differenced series. The results clearly show that all price series (level series) are non-stationary and thus integrated of at least order 1. The results further indicate that some economic variables are  $I(1)$ , while other variables are  $I(2)$  as illustrated by the ADF tests on first and second differences. In fact, for all log asset return series as well as for the credit and term spread series, we reject the hypothesis of a unit root. The corresponding price series are therefore integrated of order 1 and denoted by  $I(1)$ -variables. Other predictive economic variables (dividend yield, 10-year yield, CPI) and the T-bill rate exhibit the pattern of  $I(2)$  variables since taking second differences of the original price series is needed to eliminate the non-stationarity in the variables.

The presence of  $I(2)$  integrated variables is a concern since it implies that the cointegrating relations may still exhibit unit roots. As defined in Lütkepohl (1993), the system is said to be integrated of order 2, which we denote by  $y_t \sim I(2)$ , since the highest order of integration among the set of variables is 2. In order to address  $I(2)$  processes, the VECM model a priori needs to be extended to polynomial- or multi-cointegration frameworks, meaning that second differences, linear combinations of first differenced variables and linear combinations of level variables are included in the econometric model (see Johansen (1995) for more details on the methodology). Two approaches have been proposed in the econometric literature in order to circumvent the problem caused by such an increase in the model complexity. A first approach consists of transforming the  $I(2)$  variable into  $I(1)$  variables without loss of information. The idea is to choose a control variable among the  $I(2)$  variables that is supposed to move homogeneously with the remaining  $I(2)$  variables. Subtracting this variable from the others transforms the variables from  $I(2)$  into  $I(1)$  variables since the common trend is eliminated. A convenient choice for the control variable in our setup is the price index since subtracting it to the series means that the remaining  $I(2)$  variables will accordingly be transformed from nominal to real variables. Additionally, the control variable itself, in our case the price index, needs to be replaced by its first difference. This nominal-to-real transformation has been studied in Juselius (2007) and is inspired by preceding studies such as Engsted and Haldrup (1999), who consider various settings where some variables are  $I(2)$ , and show that adding their first differences as regressors to the model leads to consistent stationary expressions for the long-run equilibrium. A drawback of this approach is that it supposes price-homogeneity for the economic variables and thus a common trend in the price level and the corresponding nominal variables, a rather strong assumption that needs to be empirically justified. A second possibility to circumvent the problem of  $I(2)$  variables is to find cointegrating relationships, that is, linear combinations of  $I(1)$  and  $I(2)$  variables that are stationary. Then, the system is said to be cointegrated of order  $(2, 0)$ ,  $y_t \sim CI(2, 0)$ , meaning that there exists a cointegration matrix  $\beta$  such that  $\beta'y_t \sim I(0)$ . This is also referred to as *direct cointegration* (e.g. Haldrup (1998)). This approach is consistent with the

recommendations in Hansen and Juselius (1995), who argue that ex-ante cointegration rank tests should be accompanied with ex-post analysis of the cointegrating vectors. Accordingly, we will first specify the cointegration rank  $r$  and then try to find  $r$  linear combinations that form stationary variables. It is important to note that, because of the normalization in the cointegration matrix  $\beta$  (see section 2.1), different orderings of the variables lead to different cointegrating relationships.

Table 2 presents the results of the Johansen trace test for the cointegration rank. The results suggest that the cointegration rank is either 6 or 7. We proceed as follows: for each permutation of the order of variables, we estimate the reduced form VECM with cointegration ranks  $r=6$  and  $r=7$  and extract the time-series across the cointegrating vectors  $\beta'y_t$ . Next, we perform ADF unit root tests in order to test for stationarity of the cointegrating vectors. The "best" ordering is evaluated as the one that leads to the smallest p-values associated with the unit root tests. Tables 3-5 yield the estimation results for the "best" specification of the model measured by stationarity analyzes on the cointegrating vectors. The p-values associated with this order of variables range from 0 to 5.98% for the 6 vectors, which are reasonably low values.

Table 4 presents information regarding the estimated cointegrating vectors. As evidenced by the results, all 6 equilibrium relationships are quite similar with respect to the relevant, non-normalized parameters. In fact, for each of the 6 first variables (liabilities, long bond, stocks, CPI, Yield (10Y) and T-Bills) the remaining variables enter through a similar linear equilibrium relationship. While the loading on commodities and real estate is negative within the equilibrium relationship, credit spread, term spread and dividend yield enter the long-term relationship positively. Accordingly, the interpretation of the impact of the cointegrating relationship on the return dynamics merely depends on the adjustment speed parameters displayed in Table 5. The next section presents model-implied volatilities, correlations and impulse-response functions. In addition to the VECM estimates, we also estimate for comparison purposes the standard VAR(1) model on quarterly returns. Indeed, our goal is to show that explicitly accounting for the presence of cointegration relationships leads to significantly different results from what is obtained from the standard benchmark VAR model used in previous literature.

## 3.2 Model implied variances, correlations and impulse responses

Based on the estimated structures, we derive for both the VECM and the VAR(1) model implied properties of the return dynamics. In Figure 1, we plot annualized volatilities for returns on liabilities and asset classes for different investment horizons according to the equations derived in appendix A.1. A particular focus of the graphs is on the difference between VAR-implied volatilities (dashed lines) and VECM-implied volatilities (solid lines). The differences between the two econometric methodologies turns out to be rather significant for bonds, stocks and commodities, with VECM-

implied volatilities proving to be significantly lower than VAR-implied volatilities for these classes. Liability, T-bill and real estate returns do only show minor differences between the VAR and the VECM approaches. The difference in implied volatility estimates is due to the equilibrium reverting character of the additional part  $\alpha\beta'y_{t-1}$ . As explained above, while  $\beta'y_{t-1}$  establishes the equilibrium relationship,  $\alpha$  determines the instantaneous impact of a deviation from this equilibrium on  $\Delta y_t$ . In an attempt to shed some light into this discrepancy between VAR and VECM implied characteristics for stocks and commodities, it is worthwhile to refer to the credit spread variable. First, credit spread is highly significant as a predictive variable for both stocks and commodities. Secondly, credit spread enters positively into all cointegrating vectors with t-statistics ranging between 8 and 10. Given that stocks (respectively, commodity) returns depend positively (respectively, negatively) on changes in credit spread (see Table 3) and given that (according to Table 5) the highest adjustment parameter values are negative (respectively, positive) the long-term dynamics partly offsets the short-term dynamics, which in turns reduces the volatility. For real estate and liabilities, this offsetting effect is less pronounced, as evidenced by the balanced set of adjustment parameters in Table 5, meaning that some are positive while other are negative, which eventually cancels much of the overall long-term impact on the corresponding return dynamics.

A second remarkable effect is that VAR-implied volatilities seem to indicate that assets become more risky as the investment horizon increases, while VECM volatilities have contrasted implications for the various assets. Liabilities, T-bills and real estate investments appear to be more risky in the long run, while bonds, stocks and commodities exhibit a downward sloping volatility structure, especially from very short to medium-term horizons. It should be noted at this stage that a mean-reversion effect is already present in the VAR model, and is due to a mean-reversion effect induced by the predictive power of specific lagged variables and negative relationships for instantaneous covariances, as explained in Campbell and Viceira (2005). For instance, stock returns exhibit some evidence of predictability through lagged dividend yields as evidenced by positive coefficients in Tables 3 and 9. At the same time, contemporaneous innovations are negatively correlated (see Table 6). As a result a positive shock in  $t$  on dividend yields goes (on average) along with a negative shock on stock returns in  $t$  and, through the autoregressive link, a positive shock on stock returns in  $t+1$ . The offsetting effect may be interpreted as mean-reversion, which in turn lowers the volatility of compounded stock returns. However, our findings suggest that this predictability-induced mean-reversion effect is small compared to the mean-reversion effect induced by the long-term co-integration relationships.<sup>10</sup>

Next, Figure 2 displays horizon-dependent correlation coefficients between liability returns and the return on various asset classes. The plots clearly suggest that bond, stock

---

<sup>10</sup>It should be noted that Campbell and Viceira (2005) have found with a VAR model a steeper downward sloping volatility term structure for stock returns, but their analysis is based on real return series, while we explicitly analyze on the one hand the nominal returns, and its inflation component on the other hand.



and real estate returns are negatively correlated with liabilities in the short run, and that the correlation coefficient exhibits an upward pattern as the investment horizon increases. Bond returns and stock returns start to become positively correlated with liability returns after about 60 quarters (15 years) and end up with a significant positive correlation of roughly 0.4 with a 30-year investment horizon. Again, the result allows us to identify significant discrepancies between VAR and VECM models, especially for commodities and real estate. Commodity returns are positively correlated with liability returns in both cases, but the VECM implies a significantly higher and more stable correlation than the VAR. Model-implied correlations between real estate and liability returns, on the contrary, are significantly higher in the VAR model when compared to the VECM. This may be due to the fact that commodities are part of all 6 long term equilibrium relationships, a result of the normalization process of the matrix  $\beta$  and the variable order permutation procedure described above. The next section evaluates the impact of these model-implied moments and co-moments from a liability hedging portfolio perspective.

Impulse-response functions (Figure 3) indicate that with the mere exception of commodities all responses to a structural liability shock are higher when implied by the VECM. This is mainly intrinsic to the model as by definition some shocks are persistent which can not be the case in VAR model-implied shocks, an important restriction of the latter class of models.

## 4 Inflation hedging properties of various assets and portfolios

Investment horizon dependent allocation decisions have been widely studied in the literature over the last decade. Brandt (2005) and Campbell and Viceira (2005) discuss the differences between short-term or *myopic* and intertemporal asset allocation decisions. The term structure of risk, merely driven by the presence of mean-reversion effects, with different speeds of mean reversion (see Lettau and Wachter (2007)), also plays a central role in asset allocation decisions in the presence of liabilities (see also Campbell and Viceira (2005) for the notion of term structure of risk). This section uses VECM model-implied dynamics in order to assess inflation hedging potential across different investment horizons.

Consistent with the portfolio separation theorem, we will study the liability hedging portfolio (LHP) separately from the performance seeking portfolio (PSP). In a framework where liabilities are indexed with respect to inflation, and when short-term liability risk hedging is the sole focus, the optimal LHP allocation consists of investing 100% into the inflation-indexed bond portfolio (TIPS portfolio), which unfortunately leads to very limited upside potential. Consequently, the investor needs a relatively sizable significant allocation to the PSP in order to meet the return requirements, which in turn generates a relatively high funding risk. Intuitively one would expect that re-

laxing the constraint of a perfect liability fit for the LHP at the short-term horizon would allow one to include alternative asset classes in the LHP, which in turns leads to an increased upside potential. Overall, this would allow an investor to reduce his/her allocation in the PSP, which in turn shall lead to a reduced surplus risk. To formalize this intuition, we perform a scenario-based analysis in order to derive the funding ratio distribution at various investment horizons. The data generating process is described by the vector error correction model (VECM) introduced in section 2.1. We further use the structural model so as to disentangle the correlated innovation process and transform it into i.i.d. innovations. We draw i.i.d. random variables from the multivariate standard normal distribution for the structural innovations  $\varepsilon_t^s$  ( $s = 1 \dots S$ ) and obtain the modeled returns by:

$$\Delta y_t^s = c + \Pi y_{t-1}^s + \Gamma \Delta y_{t-1}^s + B \varepsilon_t^s \quad (17)$$

for a total of  $S = 5,000$  simulated paths. The first variable in  $y_t^s$  represents the liability return. We evaluate the different portfolios in terms of the funding ratio (FR) distribution. The funding ratio at  $t$  in scenarios  $s$  is accordingly given by:

$$\text{FR}_t^s = \exp((\omega' - \iota)y_t^s) \quad (18)$$

where  $\iota$  denotes the  $n \times 1$  vector containing a 1 in the first position and zeros elsewhere, and  $\omega$  is the portfolio vector. We first analyze the potential of stand-alone inflation hedging portfolios before constructing optimal portfolios.

## 4.1 Stand-alone hedging potential

This section assesses the inflation hedging potential of the various asset classes on a stand-alone basis. The analysis follows the methodology previously described, that is, all conclusions are drawn from the funding ratio distributions over the 5,000 simulated scenarios based on the fitted VECM dynamics (cf. previous section). We compare investments in the perfect liability hedging portfolio (TIPS) to investments in traditional assets (bonds and stocks) and to investments in alternative investments (commodities and real estate). Various investment horizons from 3 through 30 years are considered.

Table 10 presents the relevant indicators for the funding ratios assuming a 100% investment in the corresponding traditional or alternative asset class. The first column of the table refers to the liability hedging portfolio that is obtained by a 100% investment in an inflation-indexed security that has the same maturity as the liabilities.<sup>11</sup> In this simplified setting, this 100% TIPS liability hedging portfolio in fact proves to be

---

<sup>11</sup>Note, that in reality such portfolios may be unavailable as TIPS are issued for a small number of maturities. For instance, in the US, only TIPS with maturity up to 10 years are available. Note further that we omitted statistics for T-Bill portfolios from these tables. In fact, even though T-Bills are well correlated with the liability returns, they exhibit a significant lack of relative performance due to the term spread risk premia contained in the liability return. As a result, T-Bills under-perform liabilities significantly and are not a natural candidate for the liability-hedging portfolio.

a perfect match for the liability, and therefore mean funding ratio are equal to 1 with a 100% probability for all time-horizons.<sup>12</sup> The mean funding ratios for other classes in Panel A are higher than 1, which indicates that all assets have, on average, higher returns than the liability stream. This is consistent with the observed historical values that have been used to calibrate the data generating process described in the previous section. On the other hand, these asset classes involve the introduction of some liability risk, as evidenced by the number in Panel B and Panel C. The shortfall probabilities in Panel B illustrate the time-horizon characteristics of the assets with respect to the liabilities. Indeed, shortfall probabilities systematically decrease as the investment horizon increases. This is consistent with results obtained for the model-implied volatilities and correlations with the liabilities (see Figures 1 and 2). The correlation between bonds, stocks and real estate with the liabilities increases with time-horizon. Additionally, volatilities decrease with the investment horizon for bonds, stocks and commodities, and slightly increase, in relative terms, for real estate, while the model-implied volatilities of liability returns sharply rise as the investment horizon increases. Furthermore, the superior returns of the assets explain a part of the observed downwards sloping shortfall probabilities since they translate into a steeper positive trend in the numerator than in the denominator of the funding ratio. The strong decrease in shortfall probability for stocks is also explained by the structural relationship between liability shocks and aggregated responses to stock returns (see figure 3). Indeed, the persistence of liability shocks is much more pronounced for stocks than for other assets. As far as commodities are concerned, the response to liability shocks is immediate but not persistent which explains why shortfall probabilities decrease less sharply than in the case of stocks. Real estate on the other hand reacts negatively in the short run but "recovers" as the liability shocks leads to persistently positive shocks to future real estate returns.

Overall, these shortfall probabilities are quite high in the short run, with numbers ranging from 37% (stocks and real estate) to 47% (long bond) and fall, at least for stocks and real estate, which suggest that moving away from TIPS, if it allows for a better performance (mean funding ratios greater than 1), involves significant short-term liability risk. On the other hand, these values eventually decrease in the long-run for stocks and real estate (with shortfall probabilities equal to 10% and 15%, respectively), while they remain at a high level for commodities (25%) and the long bond (38%).

In Panel C we present the probabilities that the asset portfolio value falls "severely" short of the liability portfolio value.<sup>13</sup> For short investment horizons, these severe or extreme shortfall probabilities are alarmingly high with numbers higher than 20%. Additionally, for the long bond, extreme shortfall probabilities do not seem to decrease in the long run (26% for 3 and for 30 years with even higher numbers in the mid-run).

---

<sup>12</sup>In practice, the presence of non-financial sources of risk, e.g., actuarial risk, implies that there is some remaining funding risk even with a solution invested 100% in inflation-hedging instruments with maturities matching the maturity dates of the pension payments.

<sup>13</sup>Throughout this study, severe shortfalls are defined as a situation with a funding ratio is lower than 90%.

As far as commodities are concerned, one obtains a modest decrease from 26% (3-7 years) to 20% (30 years). On the other hand, stocks and real estate exhibit similar significantly downwards sloping patterns as in the case of shortfall probabilities (Panel B). Across all 4 assets, we observe that the level of severe shortfall probabilities (Panel C) is only slightly below the level of *standard* shortfall probabilities (Panel B) which, obviously, is a great concern for the pension fund.

As a first result, we find that both commodities and real estate exhibit potentially interesting features in an asset liability management context. Both largely outperform the liability on average, and exhibit inflation-hedging potentials that increase in the long-run. In fact real estate exhibits shortfall probability figures that are as competitive as stocks and that sharply decrease with the investment horizon (from 37% for 3 years to 15% for 30 years). Commodities substantially outperform bonds in terms of average funding ratio and shortfall probabilities. Based on these encouraging results, we expect significant gains from adding commodities and real estate to the pure liability hedging portfolio invested in TIPS.

## 4.2 Liability hedging portfolios

The results from the previous section seem to suggest that introducing commodities and real estate, in addition to TIPS, in a pension fund LHP would allow for upside-potential while limiting shortfall probabilities to a reasonably low level, at least from a long-term perspective. In what follows, we quantify the trade-off between a deviation from the perfect liability match and the resulting return upside potential, which in turn will have the welcome side effect of decreasing the required contributions. The consequences in terms of ALM risk budgets of introducing alternative asset classes so as to design enhanced liability-hedging portfolios with improved performance will be quantitatively analyzed in section 5.

In order to analyze the characteristics of liability hedging portfolios that are enhanced by commodities and real estate assets, we proceed in two steps. First, we find the optimal portfolio mix of commodities and real estate and secondly, this portfolio is added to TIPS in various proportions so as to form the enhanced liability hedging portfolio (henceforth enhanced LHP). The first step is addressed by finding the portfolio of commodities and real estate that minimizes the tracking error volatility with the TIPS portfolio. Figure 4 shows the resulting portfolios as a function of the investment horizon. As evidenced by the graph, the portfolio is well-balanced between the two assets, and the position in commodities increases with the investment horizon.

Table 11 presents funding ratio statistics for the enhanced LHP. Various portfolios, ranging from 0% to 50% of alternative investments (AI) with the remainder in TIPS, are studied. The mean funding ratio of the enhanced LHP is a simple linear combination of the individual mean funding ratios and the interpretation is straightforward. In particular, Panel A of table 11 shows that the upside potential is an increasing function of the percentage allocated to alternative assets within the LHP portfolio. On the

other hand, the more the investor allocates to the alternative assets, the higher is the risk to fall severely short of the liabilities. However, the results suggest very important gains when stepping from stand-alone alternative asset classes to alternative investment portfolios in terms of shortfall probabilities. Indeed, at all investment horizons, the shortfall probabilities are significantly lower for various versions of the enhanced LHP compared to the results obtained for the stand-alone assets (Table 10). For instance, for investment horizons of 10 years (respectively, 20 years), shortfall probabilities are as low as 17% (respectively, 9%) compared to 27%-35% (respectively, 19%-29%) on the stand-alone basis.<sup>14</sup> More importantly perhaps, Panel C indicates that the decrease in severe shortfall probability is substantial. Even for a rather important investment to the AI portfolio of 50%, severe shortfall probabilities are only 6% in the short-run and 2% for long investment horizons. For modest investments to the AI portfolio (0%-15%), the severe shortfall probability even decreases to 0% meaning that none of the 5,000 simulated paths yields a funding ratio lower than 90%, whatever the investment horizon. Overall these results suggest that the introduction of alternative investment vehicles may lead to increased upside potential for the LHP without severely increasing the shortfall risk.

## 5 Implication for risk budgeting in asset-liability management

This section attempts to study the impact of the introduction of real estate and commodities within the liability-hedging portfolio on the level of expected funding ratio over various time-horizons.

### 5.1 Risk budgeting with LDI solutions

In terms of risk budgets, the implementation of LDI solutions critically depends on the attitude towards risk. It is typically understood that high risk aversion levels leads to a predominant investment in the liability-hedging portfolio, which in turn implies low extreme funding risk (zero risk in complete market case), as well as low expected performance and therefore high necessary contributions. On the other hand, low risk aversion levels lead to a predominant investment in the performance-seeking portfolio, which implies high funding risk as well as higher expected performance, and hence lower contributions. To formalize this intuition, one may compare the initial contribution that is needed to generate a 100% funding ratio at the horizon when the investor's portfolio is fully invested in TIPS (the perfect liability-hedging portfolio) versus the initial contribution needed to generate an *average* 100% funding ratio at

---

<sup>14</sup>Note that shortfall probabilities solely depend on the investment horizon and not on the fraction allocated to the AI portfolio. This result is intrinsic to the buy-and-hold methodology and the fact that the TIPS portfolio exhibits non-stochastic funding ratios equal to 1.

the horizon when risky asset classes such as stocks and bonds are introduced. Figure 6 presents a graphical representation of this effect for different investment horizons. For instance, for an investment horizon of 20 years, an allocation of 40% to the PSP (which is so far assumed to contain stocks and bonds in a proportion that generates the maximum Sharpe ratio - see Figure 5) and 60% in the liability hedging portfolio fully invested in TIPS allows one to reduce the initial contributions by almost 20% compared to a 100% investment in TIPS liability-hedging portfolio. Of course, this contribution saving effect comes at the cost of introducing funding risk at the global portfolio level. As can be seen from Panel B in Table 12, shortfall probabilities show a significant increase in the allocation to the PSP, even though it should be noted that the magnitude of this effect decreases with time-horizon.

## 5.2 Improving ALM risk budgets through the introduction of real estate and commodities within the LHP

We now analyze the impact on ALM risk budgets of the introduction of real estate and commodities within the LHP. We first draw a comparison between the option that consists of investing 100% in the LHP but enhancing the LHP with the introduction of real estate and commodities, and the option that consists in leaving the LHP fully invested in TIPS and seeking to add performance potential through the introduction of the PSP, as discussed in the previous sub-section. A comparison of the results in Panels B and C of Table 11 and the results in Panels B and C of Table 12 clearly indicates that introducing alternatives within the LHP (option 1) systematically leads to a lower increase in risk indicators compared to the introduction of traditional asset classes through the PSP (option 2). For example the probability of a shortfall greater than 90% at the 20 years horizon is 2.1% when the investor's portfolio is invested 60% in TIPS and 40% in the combination of real estate and commodities that allows for the best liability-hedge (see Panel C of Table 11), while it reaches 5.92% when the investor's portfolio is invested 60% in TIPS and 40% in the combination of stocks and bonds that allows for the maximum Sharpe ratio (see Panel C of Table 12).

In the same spirit, Figure 7 shows the relative contribution savings as a function of the allocation to the PSP when the LHP is enhanced by 10% alternative investments. In comparison to Figure 6, the graph suggests that for comparable allocations to the PSP, contribution savings are larger in magnitude when using enhanced LHP instead of the sole TIPS LHP. Consequently, the target contribution saving can now be reached with a lower allocation to the PSP portfolio. Figures 8 and 9 illustrate this effect for LHPs that are enhanced by the introduction of 5%, respectively 10%, of alternative investments (represented again by the portfolio of real estate and commodities that minimizes the tracking error with respect to the liability portfolio). For instance, with an LHP that is composed of 90% TIPS and 10% alternative assets (Figure 9), an allocation of only 27% to the PSP leads to the same mean funding ratio, or, equivalently, to the same contribution savings, than an investment of 40% in the PSP when the LHP is solely invested in TIPS.



Table 13 presents the corresponding ALM risk indicators, with numbers that can be compared to the results in Table 12. We observe that (for a given allocation to the PSP) enhanced LHPs do not only lead to higher mean funding ratios, but they also lead to lower shortfall probabilities (see Panel B of Table 13) compared to the case of the non-enhanced (i.e., pure TIPS) LHP (Panel B of Table 12). This is obviously related to portfolio diversification effects between traditional assets within the PSP and alternative assets within the LHP. Severe shortfall probabilities (see Panel C of Table 13) also decrease substantially when compared to the case where the LHP was represented by the TIPS portfolio (see Panel B of Table 12).

Figure 10 combines the risk and return perspectives by plotting the reduction in the probability of a deficit and probability of a severe deficit indicators when shifting from the standard LHP (100% TIPS) to the enhanced LHP while maintaining the same level of mean funding ratio. In this analysis, we consider a base case of 40% investment to the PSP and 60% to TIPS, and shows the reduction of the required PSP allocation obtained by an investor willing to substitute the enhanced LHP (when either 5% alternative investments or 10% alternative investments are introduced) to the pure 100% TIPS LHP. For instance, we find that when the investment horizon is 20 years, enhancing the LHP by the introduction of 5% (respectively 10%) of the real estate + commodities portfolio allows one to reduce the allocation to the PSP by 14% (respectively, 31%) while maintaining the mean funding ratio at the same level as with the non-enhanced LHP. The graphs further show the resulting percentage reduction in shortfall probability and expected shortfall. Again for an investment horizon of 20 years, the introduction of 5% (respectively 10%) of alternatives (real estate and commodities) within the LHP leads to a 19% (respectively, 39%) reduction in shortfall probability. The reduction in severe shortfall probability is even greater and reaches a spectacular 42% (respectively, 78%).

## 6 Conclusions and directions for future research

Based on a suitable econometric framework, we have studied the relationship between inflation-driven liabilities and asset returns on bonds, stocks, commodities and real estate at various horizons. We have used the error correction form of the vector autoregressive model (VEC model or VECM) that allows for incorporating price and return dependencies, as opposed to the standard form of VAR models that solely focuses on the dynamics of returns. As a result, long-term dependencies between asset and liability values may be better captured, based on a larger fraction of the information contained in the data. We have used the VEC model-implied return dynamics in order to construct horizon-dependant volatilities and asset-liability correlations. Our empirical analysis suggests that explicitly accounting for long-term cointegration relationships leads to significant differences in forecasted properties of asset returns in terms of their term structure of risk and correlations with the liabilities. In particular we have found that VECM-implied volatilities are significantly lower than VAR-implied

volatilities for stocks, bonds and commodities, an effect with particularly pronounced in the long-term. This is due to the fact that mean-reverting properties of asset returns are accounted in a more satisfactory manner when the econometric procedure explicitly allows for the modeling of long-term dependencies between asset returns and predictive state variables. We have also found that VECM-implied correlations between asset returns and liability returns to be significantly different from the VAR-implied correlations. In particular the liability-hedging potential of commodities seems to be understated by the VAR estimation procedure compared to the case when the presence of long-term cointegration relationships is explicitly accounted for.

We have used the structural form of the VEC model to perform a Monte Carlo simulation exercise and generate a large number of simulated scenarios for asset and liability returns in order to analyze the distribution of funding ratios of various portfolios at different time-horizons. We have found that various alternative asset classes exhibit attractive inflation-driven liability hedging properties. For instance, investing in commodities leads to very low shortfall probabilities at virtually all investment horizons. While investing in real estate leads to higher shortfall probabilities in the short and medium run, significantly lower probabilities are obtained in the very long run (>30 years). These results suggest that novel liability-hedging investment solutions, including commodities and real estate in addition to inflation-linked securities, can be designed so as to decrease the cost of inflation insurance for long-horizon investors. These solutions are shown to achieve satisfactory levels of inflation hedging over the long-term at a lower cost compared to a solution solely based on TIPS or inflation swaps. The increased expected return potential generated through the introduction of commodities and real estate in addition to TIPS in the LHP allows for a reduced global allocation to the PSP while meeting the global performance expectations, which in turn allows for better risk management properties. For example, in the case of a 20 years investment horizon, the introduction of 5% (respectively 10%) of alternatives (real estate and commodities) within the LHP is found to lead to a 19% (respectively, 39%) reduction in shortfall probability. The reduction in severe shortfall probability is even greater and reaches a spectacular 42% (respectively, 78%). Overall our results suggest that alternatives are very useful ingredients for institutional investors facing inflation-related liability constraints.

Our analysis of the benefits of alternatives in institutional portfolios can be extended in several directions, and in particular would ideally encompass other forms of alternative investments. While we have focused on real estate, commodities, institutional investors have recently shown an increasing interest in other alternatives such as private equity and infrastructures, for which the intuition suggests that attractive inflation-hedging properties could also be obtained. The unavailability of time-series for these asset classes with the sufficient length and frequency is, however, a serious concern from the econometric perspective. One possible solution would involve the construction of liquid proxies for the returns on these assets based on publicly traded instruments with similar characteristics, but the adequacy between the proxy and the actual form of investment under consideration (private equity or infrastructure) would have to be

carefully assessed. Other alternative forms of investment that have gained popularity in institutional portfolios are external hedge funds portfolios, and also internal Global Tactical Asset Allocation (GTAA) strategies. While hedge funds and GTAA strategies are not expected to exhibit particularly attractive inflation-hedging properties, they appear as natural candidates to enter the performance-seeking portfolios because of their focus on factor-neutral alpha generation. Here again data availability is a serious concern since we do not have access to a time-series that would represent the performance of an index of typical GTAA managers, and given that return data on hedge fund managers have a rather limited history.

## References

- Anari, A. and J. Kolari (2002). House Prices and Inflation. *Real Estate Economics* 30(1), 67–84.
- Barberis, N. (2000). Investing for the Long Run When Returns Are Predictable. *The Journal of Finance* 55(1), 225–264.
- Beaudry, P. and F. Portier (2006). News, Stock Prices and Economic Fluctuations. *American Economic Review* 96(4), 1293–1307.
- Blanco, R., S. Brennan, and I. Marsh (2005). An Empirical Analysis of the Dynamic Relation between Investment-Grade Bonds and Credit Default Swaps. *The Journal of Finance* 60(5), 2255–2281.
- Boudoukh, J. and M. Richardson (1993). Stock Returns and Inflation: A Long-Horizon Perspective. *American Economic Review* 83, 1346–1346.
- Brandt, M. (2005). Portfolio Choice Problems. In: Ait-Sahalia, Y., Hansen, L.P. (Eds.), *Handbook of Financial Econometrics*.
- Breitung, J., R. Brüggemann, and H. Lütkepohl (2004). Structural Vector Autoregressive Modeling and Impulse Responses. In H. Lütkepohl and M. Krätzig (Eds.), *Applied Time Series Econometrics*, Chapter 4, pp. 159–196. Cambridge University Press.
- Brüggemann, R. (2006). Finite Sample Properties of Impulse Response Intervals in SVECMs with Long-Run Identifying Restrictions. *SFB 649 Discussion Paper Series, Humboldt University Berlin*.
- Campbell, J. and R. Shiller (1988). Stock Prices, Earnings and Expected Dividends. *Journal of Finance* 43(3), 661–676.
- Campbell, J. and L. Viceira (1999). Consumption and portfolio decisions when expected returns are time varying. *The Quarterly Journal of Economics* 114(2), 433–495.
- Campbell, J. and L. Viceira (2002). *Strategic Asset Allocation: Portfolio Choice for Long-Term Investors*. Oxford University Press.
- Campbell, J. and L. Viceira (2004). Long-Horizon Mean-Variance Analysis: A User Guide. *Manuscript, Harvard University, Cambridge, MA*.
- Campbell, J. and L. Viceira (2005). The Term Structure of the Risk-Return Tradeoff. *Financial Analysts Journal* 61(1), 34–44.
- Campbell, J. and T. Vuolteenaho (2004). Inflation Illusion and Stock Prices. *American Economic Review* 94(2), 19–23.

- Davidson, J., D. Hendry, F. Srba, and S. Yeo (1978). Econometric modelling of the aggregate time-series relationship between consumers' expenditure and income in the United Kingdom. *Economic Journal* 88(352), 661–92.
- Durre, A. and P. Giot (2007). An International Analysis of Earnings, Stock Prices and Bond Yields. *Journal of Business Finance & Accounting* 34(3-4), 613–641.
- Engle, R. and C. Granger (1987). Cointegration and Error Correction. *Econometrica* 55(2), 251–276.
- Engsted, T. and N. Haldrup (1999). Estimating the LQAC model with I (2) variables. *Journal of Applied Econometrics* 14(2), 155–170.
- Fama, E. (1981). Stock Returns, Real Activity, Inflation, and Money. *The American Economic Review* 71(4), 545–565.
- Fama, E. and G. Schwert (1977). Asset Returns and Inflation. *Journal of Financial Economics* 5(2), 115–146.
- Gonzalo, J. and S. Ng (2001). A systematic framework for analyzing the dynamic effects of permanent and transitory shocks. *Journal of Economic Dynamics and Control* 25(10), 1527–1546.
- Gorton, G. and K. Rouwenhorst (2006). Facts and Fantasies about Commodities Futures. *Financial Analysts Journal* 62(2), 47–68.
- Greene, W. (2003). *Econometrics*. Prentice Hall, New York.
- Gultekin, N. (1983). Stock Market Returns and Inflation Forecasts. *Journal of Finance* 38(3), 663–673.
- Haldrup, N. (1998). An Econometric Analysis of I (2) Variables. *Journal of Economic Surveys* 12(5), 595–650.
- Hamilton, J. (1994). *Time Series Analysis*. Princeton University Press.
- Hansen, H. and K. Juselius (1995). Manual to CATS in RATS: Cointegration Analysis of Time Series.
- Hartzell, D., J. Hekman, and M. Miles (1987). Real Estate Returns and Inflation. *Real Estate Economics* 15(1), 617–637.
- Hodrick, R. (1992). Dividend yields and expected stock returns: alternative procedures for inference and measurement. *Review of Financial Studies* 5(3), 357–386.
- Hoesli, M., C. Lizieri, and B. MacGregor (2007). The Inflation Hedging Characteristics of US and UK Investments: A Multi-Factor Error Correction Approach. *The Journal of Real Estate Finance and Economics* 36(2), 183–206.

- Hoevenaars, R., R. Molenaar, P. Schotman, and T. Steenkamp (2008). Strategic Asset Allocation with Liabilities: Beyond Stocks and Bonds. *Journal of Economic Dynamics and Control* (forthcoming).
- Johansen, S. (1995). *Likelihood-Based Inference in Cointegrated Vector Autoregressive Models*. Oxford University Press, USA.
- Juselius, K. (2007). *The Cointegrated VAR Model: Econometric Methodology and Macroeconomic Applications* (2nd ed.). Oxford University Press.
- Kandel, S. and R. Stambaugh (1996). On the Predictability of Stock Returns: An Asset-Allocation Perspective. *The Journal of Finance* 51(2), 385–424.
- Kaul, G. (1987). Stock returns and inflation: The role of the monetary sector. *Journal of Financial Economics* 18(2), 253–276.
- Kothari, S. and J. Shanken (2004). Asset Allocation with Inflation-Protected Bonds. *Financial Analysts Journal* 60(1), 54–70.
- Lettau, M. and S. Ludvigson (2004). Understanding Trend and Cycle in Asset Values: Reevaluating the Wealth Effect on Consumption. *American Economic Review* 94(1), 276–299.
- Lettau, M. and J. Wachter (2007). Why Is Long-Horizon Equity Less Risky A Duration-Based Explanation of the Value Premium. *The Journal of Finance* 62(1), 55–92.
- Lütkepohl, H. (1993). *Introduction to Multiple Time Series Analysis*. Springer.
- Lütkepohl, H. (2008). Problems related to over-identifying restrictions for structural vector error correction models. *Economics Letters* 99(3).
- Rubens, J., M. Bond, and J. Webb (1989). The Inflation-Hedging Effectiveness of Real Estate. *Journal of Real Estate Research* 4(2), 45–55.
- Schotman, P. and M. Schweitzer (2000). Horizon sensitivity of the inflation hedge of stocks. *Journal of Empirical Finance* 7(3-4), 301–315.
- Stock, J. and M. Watson (1999). Forecasting inflation. *Journal of Monetary Economics* 44(2), 293–335.
- Vlaar, P. (2004). On the asymptotic distribution of impulse response functions with long-run restrictions. *Econometric Theory* 20(05), 891–903.
- Westerheide, P. (2006). Cointegration of real estate stocks and reits with common stocks, bonds and consumer price inflation : an international comparison. ZEW Discussion Papers 06-57, ZEW - Zentrum für Europäische Wirtschaftsforschung / Center for European Economic Research.



# A Appendix

## A.1 Model-implied returns, variances and correlations

As in continuous-time models, our econometric approach allows us to obtain analytical expressions for time-dependent variances, covariances and expected returns. To see this, we first write the model-implied forward looking returns for the first 3 dates as functions of the interim shocks and current values for  $y_t$  and  $\Delta y_t$ .<sup>15</sup>

$$\begin{aligned}
\Delta y_{t+1} &= \Pi y_t + \Gamma \Delta y_t + u_{t+1} \\
\Delta y_{t+2} &= \Pi y_{t+1} + \Gamma \Delta y_{t+1} + u_{t+2} \\
&= \Pi (y_t + \Delta y_{t+1}) + \Gamma \Delta y_{t+1} + u_{t+2} \\
&= \Pi y_t + (\Pi + \Gamma) (\Pi y_t + \Gamma \Delta y_t + u_{t+1}) + u_{t+2} \\
&= \Pi (I + \Pi \Gamma) y_t + (\Pi + \Gamma) \Gamma \Delta y_t + (\Pi + \Gamma) u_{t+1} + u_{t+2} \\
\Delta y_{t+3} &= \Pi y_{t+2} + \Gamma \Delta y_{t+2} + u_{t+3} \\
&= \Pi (y_t + \Delta y_{t+1} + \Delta y_{t+2}) + \Gamma \Delta y_{t+2} + u_{t+3} \\
&= [\Pi + \Pi^2 + (\Pi + \Gamma) \Pi (I + \Pi + \Gamma)] y_t + [\Gamma (\Pi + (\Pi + \Gamma)^2)] \Delta y_t \\
&\quad + [\Pi + (\Pi + \Gamma)^2] u_{t+1} + (\Pi + \Gamma) u_{t+2} + u_{t+3}.
\end{aligned} \tag{A.1}$$

We subsequently obtain all finite forward looking implied returns through iteration and denote:

$$\Delta y_{t+k} = \Psi_0^{(k)} y_t + \Psi_\Delta^{(k)} \Delta y_t + \sum_{j=0}^{k-1} \Psi_u^{(j)} u_{t+k-j}. \tag{A.2}$$

These expressions may then be used to define model-implied expected returns, variances and covariances. Using  $y_{t+k} = y_0 + \Delta y_{t+1} + \dots + \Delta y_{t+k}$ , it is straightforward to show that we obtain:

$$E_t (y_{t+k}) = \left[ \sum_{i=1}^k \Psi_0^{(i)} \right] y_t + \left[ \sum_{i=1}^k \Psi_\Delta^{(i)} \right] \Delta y_t \tag{A.3}$$

$$\text{Var}_t (y_{t+k}) = \sum_{i=1}^k \left[ \left( \sum_{j=0}^{i-1} \Psi_\varepsilon^{(j)} \right) \Sigma_u \left( \sum_{j=0}^{i-1} \Psi_u^{(j)} \right)' \right] \tag{A.4}$$

where  $\Sigma_u$  denotes the time-invariant covariance matrix of the innovation process  $u$ . Correlation coefficients may also directly be derived from relation (A.4).<sup>16</sup>

<sup>15</sup>We use a model with 1 lag as we will focus on this specification for our later numerical application. Further, as noted in Campbell and Viceira (2004) each  $\text{Var}(p)$  model may be transformed into a  $\text{Var}(1)$  model by adding lagged version of the vector of endogenous variables as additional state variables.

<sup>16</sup>Note that similar expressions may be obtained for the  $\text{VAR}(1)$  model on log returns. In this case,  $\Psi_0^{(s)}$  is equal to 0 and  $\Psi_\Delta^{(s)}$  and  $\Psi_u^{(s)}$  simplify to  $\Psi_\Delta^{(s)} = \Psi_u^{(s)} = \Phi_s$  with  $\Phi_s$  as in (3). It is obvious that  $\text{VAR}(1)$  implied conditional moments are different from  $\text{VECM}(1)$  implied moments except if  $\Pi = 0$  and  $\Gamma = A$ . Note further that the non-stochastic constant term has been introduced as one of the endogenous variables for tractability of the formulas. Accordingly, assuming the first entry is the constant term, the first line and the first column of  $\Sigma$  solely contain zeros.

## A.2 TIPS-Pricing

Consider a pension fund that faces inflation-indexed liability payments. Such inflation-linked cash-flows are formally similar to the payoff of a portfolio of zero-coupon treasury-inflation-protected securities (TIPS) with the corresponding face values and maturity dates. In what follows, we provide a closed-form expression for the price of this liability portfolio. Let us denote by  $\Phi(t)$  the price index level at  $t$ . For each real dollar payment scheduled for date  $t$ , the pension fund will eventually pay  $\Phi(t)$ . Let us further denote  $\Psi(t)$  the stochastic discount factor or, put differently, the risk-neutral price of a unit real payment scheduled for  $t$ .

The current value of the liability (or equivalently TIPS) portfolio may then be written as:

$$L_0 = \mathbb{E}_0 \left[ \sum_{t=1}^T l_t \frac{\Phi(t)}{\Psi(t)} \right] \quad (\text{A.5})$$

with

$$\Phi(t) = \exp \left( \sum_{i=1}^t \pi(i) \right) \quad \Psi(t) = \exp \left( \sum_{i=1}^t r_L(i) \right) \quad (\text{A.6})$$

where  $\pi(t)$  denotes expected inflation at  $t$  and  $r_L(t)$  the risk neutral return of the liability portfolio at date  $t$ .<sup>17</sup> We obtain:

$$L_0 = \mathbb{E}_0 \left[ \sum_{t=1}^T l_t \exp \left( \sum_{i=1}^t -r_L(i) + \pi(i) \right) \right] \quad (\text{A.7})$$

$$= \sum_{t=1}^T l_t \mathbb{E}_0 \left[ \exp \left( \sum_{i=1}^t -r_L(i) + \pi(i) \right) \right] \quad (\text{A.8})$$

Assuming normally distributed residuals  $u_t$  in (4) and (6) we use the expected value expression of log-normally distributed random variables:  $\mathbb{E}(\exp(X)) = \exp \left[ \mathbb{E}(X) + \frac{1}{2} \text{Var}(X) \right]$  to obtain:

$$L_0 = \sum_{t=1}^T l_t \exp \left( \mathbb{E}_0 \left[ \sum_{i=1}^t -r_L(i) + \pi(i) \right] + \frac{1}{2} \text{Var}_0 \left[ \sum_{i=1}^t -r_L(i) + \pi(i) \right] \right)$$

Finally, we use (A.3) and (A.4) and write risk-neutral price of the liability stream at initial date 0 as:

$$L_0 = \sum_{t=1}^T l_t \exp \left[ -\mu_{r_L}^{(t)} + \mu_{\pi}^{(t)} + \frac{1}{2} \left( \Sigma_{r_L, r_L}^{(t)} + \Sigma_{\pi, \pi}^{(t)} - 2\Sigma_{r_L, \pi}^{(t)} \right) \right] \quad (\text{A.9})$$

where  $\mu_i^{(t)}$  denotes the element in the vector  $\mathbb{E}_0(y_t)$  that corresponds to variable  $i$  and  $\Sigma_{i,j}$  is the covariance-element in the matrix  $\text{Var}_0(y_t)$  that corresponds to variables  $i$  and  $j$ .

---

<sup>17</sup> $r_L$  is typically a sum of three components: the real treasury bill rate, realized inflation and a risk premia that accounts for interest rate risk and (the absence of) inflation risk (see Kothari and Shanken (2004)).

**Table 1**  
Unit-root tests (ADF)

	Level		First differences		Second differences	
	ADF	p-value	ADF	p-value	ADF	p-value
Liabilities	-2.31	0.17	-3.16	0.02	-6.03	0.00
Long Bond	-0.29	0.92	-6.17	0.00	-7.90	0.00
Stocks	-0.55	0.88	-5.58	0.00	-8.93	0.00
CPI	-2.14	0.24	-2.70	0.08	-6.10	0.00
Yield (10Y)	-2.70	0.08	-1.39	0.57	-5.85	0.00
T Bills	-2.04	0.28	-2.25	0.19	-4.76	0.00
Commodities	-0.40	0.91	-5.05	0.00	-6.78	0.00
Real Estate	-0.65	0.85	-4.86	0.00	-8.60	0.00
Credit Spread	0.42	0.98	-3.75	0.00	-5.96	0.00
Term Spread	-0.62	0.86	-4.19	0.00	-6.43	0.00
Div. Yield	2.93	1.00	-1.68	0.44	-5.11	0.00

Augmented Dickey-Fuller (ADF) tests are run for each time series. Quarterly price series from Q1 1973 through Q4 2007 are analyzed. ADF-test statistics and the corresponding p-values are given. The first two columns correspond to the ADF tests on the original price series. Column 3-4 yield the ADF test on first differences, that is, quarterly log returns. The last two columns yield the ADF test results for log-return differential series. Across all test we have introduced 4 lags which corresponds to 1 year lagged returns.

**Table 2**  
Johansen's trace test for cointegration order

r0	LR	90%	95%	99%	p-value
0	1799.31	277.38	285.02	299.74	0.00
1	1036.85	232.10	239.12	252.66	0.00
2	626.83	190.83	197.22	209.58	0.00
3	400.91	153.56	159.32	170.50	0.00
4	228.69	120.28	125.42	135.43	0.00
5	124.63	91.01	95.51	104.36	0.00
6	74.72	65.73	69.61	77.29	0.02
7	45.83	44.45	47.71	54.23	0.08
8	22.56	27.16	29.80	35.21	0.28
9	5.39	13.42	15.41	19.62	0.77

The table yields the results of the Johansen's trace test. r0 denotes the cointegration rank under the null hypothesis and LR the corresponding test statistic. The remaining columns give critical values for rejecting the test for various confidence levels and, in the last column, p-values. Quarterly price series from Q1 1973 through Q4 2007 are analyzed.

**Table 3**  
VECM parameter estimates ( $\Gamma$ )

	1	2	3	4	5	6	7	8	9	10	11
1 Liabilities	1.01 (1.94)	0.00 (0.17)	-0.00 (-0.06)	-1.10 (-2.04)	-0.63 (-2.57)	0.96 (1.70)	0.02 (2.62)	0.02 (1.94)	-0.56 (-2.64)	0.13 (1.39)	0.01 (2.99)
2 Long Bond	-1.75 (-0.39)	0.11 (0.50)	0.01 (0.20)	1.76 (0.38)	-0.15 (-0.07)	2.57 (0.54)	-0.03 (-0.60)	-0.12 (-1.59)	1.84 (1.02)	0.72 (0.94)	-0.08 (-2.07)
3 Stocks	2.56 (0.35)	0.31 (0.85)	-0.12 (-1.09)	-4.65 (-0.61)	-1.33 (-0.38)	2.42 (0.31)	-0.02 (-0.24)	-0.04 (-0.33)	5.36 (1.81)	0.27 (0.21)	0.19 (2.95)
4 CPI	0.16 (0.33)	0.01 (0.37)	-0.00 (-0.30)	-0.25 (-0.52)	-0.66 (-2.97)	0.97 (1.92)	0.01 (2.68)	0.01 (1.82)	-0.57 (-3.00)	0.14 (1.67)	0.01 (2.89)
5 Yield (10Y)	0.33 (1.36)	-0.03 (-2.46)	0.00 (0.84)	-0.38 (-1.51)	0.25 (2.14)	0.28 (1.07)	0.00 (0.86)	0.01 (2.30)	-0.12 (-1.26)	0.01 (0.33)	0.00 (0.43)
6 T Bills	-0.04 (-0.26)	-0.01 (-1.78)	0.00 (1.41)	-0.03 (-0.19)	-0.11 (-1.52)	1.38 (8.23)	0.00 (2.40)	0.00 (1.39)	-0.09 (-1.47)	0.16 (6.00)	0.00 (0.66)
7 Commodities	4.07 (0.50)	0.84 (2.06)	0.14 (1.21)	-2.57 (-0.30)	-9.01 (-2.32)	-15.45 (-1.74)	0.04 (0.43)	0.11 (0.83)	-10.75 (-3.23)	-3.51 (-2.47)	0.08 (1.10)
8 Real Estate	-0.59 (-0.09)	0.31 (0.92)	-0.07 (-0.75)	0.27 (0.04)	1.33 (0.41)	-4.76 (-0.65)	-0.20 (-2.55)	-0.21 (-1.90)	9.05 (3.30)	-0.22 (-0.19)	-0.02 (-0.34)
9 Credit Spread	1.09 (5.96)	0.03 (2.94)	-0.01 (-3.07)	-1.05 (-5.50)	0.05 (0.57)	-0.62 (-3.10)	-0.00 (-1.64)	-0.01 (-2.76)	0.63 (8.40)	0.02 (0.49)	-0.00 (-1.13)
10 Term Spread	-0.31 (-0.53)	0.00 (0.04)	-0.01 (-0.88)	0.37 (0.61)	0.93 (3.38)	-4.16 (-6.64)	0.01 (0.94)	0.00 (0.00)	0.42 (1.77)	-0.57 (-5.69)	0.01 (1.28)
11 Div. Yield	6.41 (0.63)	1.47 (2.89)	0.25 (1.72)	-9.01 (-0.86)	-16.98 (-3.53)	11.60 (1.06)	0.15 (1.27)	-0.12 (-0.74)	-13.06 (-3.17)	2.74 (1.56)	0.02 (0.24)

The table yields the estimated lagged-coefficient matrix  $\Gamma$  of the VEC model. t-stats are given in parentheses. Data is from Q1 1973 through Q4 2007.

**Table 4**  
Estimated cointegration relationships ( $\beta$ )

	CR1	CR2	CR3	CR4	CR5	CR6
1 Liabilities	1.00 (0.00)	0.00 (0.00)	0.00 (0.00)	0.00 (0.00)	0.00 (0.00)	0.00 (0.00)
2 Long Bond	0.00 (0.00)	1.00 (0.00)	0.00 (0.00)	0.00 (0.00)	0.00 (0.00)	0.00 (0.00)
3 Stocks	0.00 (0.00)	0.00 (0.00)	1.00 (0.00)	0.00 (0.00)	0.00 (0.00)	0.00 (0.00)
4 CPI	0.00 (0.00)	0.00 (0.00)	0.00 (0.00)	1.00 (0.00)	0.00 (0.00)	0.00 (0.00)
5 Yield (10Y)	0.00 (0.00)	0.00 (0.00)	0.00 (0.00)	0.00 (0.00)	1.00 (0.00)	0.00 (0.00)
6 T Bills	0.00 (0.00)	0.00 (0.00)	0.00 (0.00)	0.00 (0.00)	0.00 (0.00)	1.00 (0.00)
7 Commodities	-0.55 (-7.50)	-0.40 (-5.74)	-0.93 (-5.83)	-0.42 (-5.96)	-2.33 (-6.87)	-0.56 (-6.93)
8 Real Estate	-0.06 (-0.81)	-0.04 (-0.57)	-0.43 (-2.66)	-0.12 (-1.70)	-0.34 (-1.00)	-0.08 (-0.97)
9 Credit Spread	6.60 (10.09)	5.80 (9.28)	11.73 (8.22)	6.33 (9.99)	30.78 (10.10)	7.29 (10.07)
10 Term Spread	0.57 (2.04)	0.45 (1.66)	2.68 (4.37)	0.71 (2.59)	3.08 (2.35)	0.96 (3.07)
11 Div. Yield	0.04 (10.85)	0.03 (10.33)	0.07 (9.13)	0.04 (10.38)	0.17 (10.75)	0.04 (10.73)

The table yields the estimated cointegration relationships (CR), that is the parameter matrix  $\beta$  of the VEC model. t-stats are given in parentheses. Data is from Q1 1973 through Q4 2007.

**Table 5**  
Estimates for adjustment parameters ( $\alpha$ )

	CR1	CR2	CR3	CR4	CR5	CR6
1 Liabilities	0.12 (2.00)	-0.02 (-0.73)	-0.01 (-1.57)	-0.05 (-1.13)	-0.02 (-0.22)	0.03 (0.08)
2 Long Bond	-0.13 (-0.24)	-0.51 (-2.22)	-0.01 (-0.42)	-0.31 (-0.84)	1.94 (2.35)	-7.40 (-2.19)
3 Stocks	-1.56 (-1.80)	-0.03 (-0.08)	0.07 (1.32)	0.70 (1.16)	0.47 (0.34)	-1.33 (-0.24)
4 CPI	0.14 (2.56)	-0.03 (-1.09)	-0.01 (-1.89)	-0.06 (-1.41)	0.01 (0.17)	-0.13 (-0.35)
5 Yield (10Y)	0.02 (0.74)	-0.07 (-5.78)	0.00 (0.07)	0.03 (1.56)	-0.04 (-0.97)	0.20 (1.08)
6 T Bills	0.00 (0.01)	-0.00 (-0.42)	0.00 (0.56)	-0.00 (-0.32)	0.01 (0.24)	-0.03 (-0.23)
7 Commodities	2.34 (2.39)	-1.00 (-2.35)	0.00 (0.06)	-0.63 (-0.92)	-3.13 (-2.05)	12.53 (2.01)
8 Real Estate	-3.01 (-3.74)	-0.18 (-0.52)	0.11 (2.25)	1.90 (3.39)	0.62 (0.49)	-1.57 (-0.31)
9 Credit Spread	-0.01 (-0.65)	0.04 (4.31)	-0.00 (-1.39)	0.05 (3.53)	-0.15 (-4.40)	0.56 (4.06)
10 Term Spread	0.24 (3.46)	-0.04 (-1.48)	0.01 (2.03)	-0.07 (-1.53)	0.26 (2.42)	-1.22 (-2.77)
11 Div. Yield	-0.02 (-0.02)	-1.63 (-3.09)	-0.51 (-7.18)	2.34 (2.78)	-0.68 (-0.36)	3.30 (0.43)

The table yields the estimated adjustment parameters (parameter matrix  $\alpha$  of the VEC model) for each cointegration relationship. t-stats are given in parentheses. Data is from Q1 1973 through Q4 2007.

**Table 6**  
VECM residuals - Correlation coefficients

	1	2	3	4	5	6	7	8	9	10	11
1 Liabilities	1	-0.61	-0.35	0.97	0.31	0.47	0.53	-0.40	-0.31	0.06	0.06
2 Long Bond	-0.61	1	0.29	-0.42	-0.48	-0.29	-0.12	0.41	0.28	-0.36	-0.07
3 Stocks	-0.35	0.29	1	-0.30	-0.22	-0.18	-0.24	0.59	0.10	-0.00	-0.28
4 CPI	0.97	-0.42	-0.30	1	0.19	0.43	0.58	-0.32	-0.25	-0.05	0.03
5 Yield (10Y)	0.31	-0.48	-0.22	0.19	1	0.31	-0.16	-0.27	-0.68	0.44	0.09
6 T Bills	0.47	-0.29	-0.18	0.43	0.31	1	0.19	-0.33	-0.37	-0.32	-0.07
7 Commodities	0.53	-0.12	-0.24	0.58	-0.16	0.19	1	-0.10	0.04	-0.19	-0.04
8 Real Estate	-0.40	0.41	0.59	-0.32	-0.27	-0.33	-0.10	1	0.13	-0.06	-0.46
9 Credit Spread	-0.31	0.28	0.10	-0.25	-0.68	-0.37	0.04	0.13	1	-0.06	-0.05
10 Term Spread	0.06	-0.36	-0.00	-0.05	0.44	-0.32	-0.19	-0.06	-0.06	1	0.15
11 Div. Yield	0.06	-0.07	-0.28	0.03	0.09	-0.07	-0.04	-0.46	-0.05	0.15	1

The table yields the VECM residual correlation matrix.



**Table 7**  
Structural VECM - contemporaneous shocks ( $B$ )

	1	2	3	4	5	6	7	8	9	10	11
1 Liabilities	0.00 (0.78)	-0.00 (-1.72)	-0.00 (-1.03)	0.00 (1.46)	0.00 (1.76)	0.00 (1.58)	0.00 (1.85)	-0.00 (-2.21)	0.00 (0.30)	0.00 (0.61)	0.00 (0.96)
2 Long Bond	0.00 (0.37)	0.02 (2.07)	0.01 (0.83)	-0.03 (-1.28)	-0.02 (-2.15)	0.01 (0.93)	-0.00 (-0.61)	-0.00 (-0.04)	-0.01 (-2.12)	0.00 (0.17)	0.01 (0.72)
3 Stocks	-0.03 (-1.32)	0.05 (1.99)	0.01 (1.43)	-0.02 (-0.92)	0.04 (1.78)	0.02 (1.34)	-0.02 (-1.92)	0.02 (1.79)	0.00 (0.15)	-0.00 (-0.35)	-0.00 (-0.25)
4 CPI	0.00 (1.34)	-0.00 (-1.32)	-0.00 (-1.03)	0.00 (0.93)	0.00 (1.61)	0.00 (1.65)	0.00 (1.64)	-0.00 (-2.11)	0.00 (0.05)	0.00 (0.93)	0.00 (0.98)
5 Yield (10Y)	0.00 (0.09)	-0.00 (-1.69)	0.00 (0.63)	0.00 (1.18)	0.00 (1.41)	0.00 (1.12)	0.00 (1.78)	0.00 (1.89)	-0.00 (-1.09)	0.00 (0.83)	0.00 (1.57)
6 T Bills	0.00 (0.73)	0.00 (0.70)	-0.00 (-1.02)	0.00 (1.35)	-0.00 (-0.95)	0.00 (1.97)	0.00 (0.00)	0.00 (0.00)	0.00 (0.00)	0.00 (0.00)	0.00 (0.00)
7 Commodities	0.02 (1.21)	-0.00 (-0.08)	-0.06 (-0.95)	-0.02 (-0.71)	0.01 (0.62)	-0.01 (-0.56)	0.05 (5.73)	0.00 (0.00)	0.00 (0.00)	0.00 (0.00)	0.00 (0.00)
8 Real Estate	0.01 (0.57)	0.02 (1.20)	0.00 (0.21)	-0.04 (-1.19)	0.01 (1.24)	0.01 (0.78)	-0.03 (-2.30)	0.04 (3.90)	0.00 (0.00)	0.00 (0.00)	0.00 (0.00)
9 Credit Spread	-0.00 (-1.55)	0.00 (0.41)	-0.00 (-0.33)	-0.00 (-1.24)	-0.00 (-2.04)	-0.00 (-0.35)	-0.00 (-1.03)	-0.00 (-1.09)	0.00 (3.80)	0.00 (0.00)	0.00 (0.00)
10 Term Spread	-0.00 (-1.37)	-0.00 (-1.88)	0.00 (0.81)	0.00 (0.10)	0.00 (1.53)	-0.00 (-0.30)	0.00 (0.30)	0.00 (1.26)	-0.00 (-0.74)	0.00 (2.70)	0.00 (0.00)
11 Div. Yield	-0.02 (-0.96)	-0.01 (-0.40)	0.00 (0.05)	0.02 (0.78)	-0.01 (-0.42)	-0.06 (-2.09)	0.00 (0.05)	-0.04 (-1.27)	-0.02 (-1.08)	0.01 (0.28)	0.07 (2.44)

The table shows the calibrated B-matrix of the structural VECM (SVECM). t-stats are given in parentheses. A t-stat of zero indicates that an ex-ante identification restriction of 0 has been set to the parameter. Data is from Q1 1973 through Q4 2007.

**Table 8**  
Structural VECM - transitory shocks ( $\Xi B$ )

	1	2	3	4	5	6	7	8	9	10	11
1 Liabilities	0.03 (0.61)	0.00 (1.05)	-0.00 (-0.83)	0.00 (0.94)	0.01 (2.02)	0.00 (0.00)	0.00 (0.00)	0.00 (0.00)	0.00 (0.00)	0.00 (0.00)	0.00 (0.00)
2 Long Bond	0.02 (0.61)	0.00 (0.71)	0.00 (0.88)	0.00 (1.04)	0.00 (2.02)	0.00 (0.00)	0.00 (0.00)	0.00 (0.00)	0.00 (0.00)	0.00 (0.00)	0.00 (0.00)
3 Stocks	0.03 (0.34)	0.04 (1.72)	-0.00 (-0.00)	-0.03 (-1.13)	0.01 (2.02)	0.00 (0.00)	0.00 (0.00)	0.00 (0.00)	0.00 (0.00)	0.00 (0.00)	0.00 (0.00)
4 CPI	0.02 (0.51)	0.01 (1.48)	0.00 (0.96)	-0.01 (-1.09)	0.00 (2.02)	0.00 (0.00)	0.00 (0.00)	0.00 (0.00)	0.00 (0.00)	0.00 (0.00)	0.00 (0.00)
5 Yield (10Y)	0.12 (0.58)	0.02 (1.51)	0.00 (0.22)	-0.00 (-0.38)	0.02 (2.02)	0.00 (0.00)	0.00 (0.00)	0.00 (0.00)	0.00 (0.00)	0.00 (0.00)	0.00 (0.00)
6 T Bills	0.03 (0.58)	0.01 (1.75)	-0.00 (-0.08)	-0.00 (-0.19)	0.01 (2.02)	0.00 (0.00)	0.00 (0.00)	0.00 (0.00)	0.00 (0.00)	0.00 (0.00)	0.00 (0.00)
7 Commodities	0.02 (0.36)	-0.00 (-0.14)	-0.06 (-0.95)	0.01 (1.17)	0.01 (2.02)	0.00 (0.00)	0.00 (0.00)	0.00 (0.00)	0.00 (0.00)	0.00 (0.00)	0.00 (0.00)
8 Real Estate	0.01 (0.08)	0.02 (0.62)	0.01 (0.17)	-0.10 (-1.15)	0.00 (0.00)	0.00 (0.00)	0.00 (0.00)	0.00 (0.00)	0.00 (0.00)	0.00 (0.00)	0.00 (0.00)
9 Credit Spread	-0.01 (-0.62)	0.00 (0.72)	-0.00 (-0.94)	0.00 (0.00)	0.00 (0.00)	0.00 (0.00)	0.00 (0.00)	0.00 (0.00)	0.00 (0.00)	0.00 (0.00)	0.00 (0.00)
10 Term Spread	0.01 (0.40)	-0.02 (-2.07)	0.00 (0.00)	0.00 (0.00)	0.00 (0.00)	0.00 (0.00)	0.00 (0.00)	0.00 (0.00)	0.00 (0.00)	0.00 (0.00)	0.00 (0.00)
11 Div. Yield	1.84 (0.64)	0.00 (0.00)	0.00 (0.00)	0.00 (0.00)	0.00 (0.00)	0.00 (0.00)	0.00 (0.00)	0.00 (0.00)	0.00 (0.00)	0.00 (0.00)	0.00 (0.00)

The table shows the long-run impact matrix  $\Xi B$  of the structural VECM (SVECM). t-stats are given in parentheses. A t-stat of zero indicates that an ex-ante identification restriction of 0 has been set to the parameter. Data is from Q1 1973 through Q4 2007.

**Table 9**  
VAR parameter estimates (*A*)

	1	2	3	4	5	6	7	8	9	10	11
1 Liabilities	0.07 (0.36)	-0.02 (-1.89)	-0.00 (-0.48)	0.10 (0.63)	-0.17 (-1.65)	0.90 (2.33)	0.01 (1.53)	0.01 (1.05)	-0.16 (-1.43)	0.05 (0.63)	0.01 (2.61)
2 Long Bond	4.01 (2.50)	-0.05 (-0.55)	-0.00 (-0.03)	-2.85 (-2.18)	2.18 (2.63)	-6.51 (-2.05)	-0.04 (-0.75)	-0.10 (-1.29)	-0.48 (-0.52)	-0.19 (-0.26)	-0.06 (-2.53)
3 Stocks	-0.16 (-0.06)	0.27 (1.69)	-0.08 (-0.69)	-1.52 (-0.71)	-2.31 (-1.69)	4.84 (0.92)	0.04 (0.48)	0.00 (0.04)	2.25 (1.48)	0.25 (0.21)	0.16 (4.08)
4 CPI	-0.82 (-4.55)	-0.02 (-2.01)	-0.01 (-0.81)	1.03 (7.04)	-0.13 (-1.41)	0.76 (2.13)	0.01 (1.23)	0.01 (0.91)	-0.17 (-1.68)	0.05 (0.58)	0.01 (2.32)
5 Yield (10Y)	-0.02 (-0.25)	-0.10 (-16.49)	0.00 (1.14)	0.04 (0.52)	0.89 (18.04)	0.38 (2.02)	0.00 (0.74)	0.01 (1.78)	0.10 (1.79)	0.04 (0.85)	0.00 (2.17)
6 T Bills	-0.12 (-2.25)	-0.02 (-4.84)	0.00 (1.57)	0.08 (1.81)	-0.08 (-2.68)	1.38 (12.63)	0.00 (2.37)	0.00 (1.07)	-0.09 (-2.99)	0.15 (6.08)	-0.00 (-1.09)
7 Commodities	0.82 (0.26)	-0.18 (-0.93)	0.19 (1.49)	-0.65 (-0.25)	1.64 (1.01)	-9.11 (-1.46)	-0.04 (-0.37)	-0.07 (-0.46)	-2.16 (-1.19)	-2.50 (-1.77)	0.02 (0.46)
8 Real Estate	-2.43 (-0.91)	0.10 (0.62)	-0.01 (-0.10)	1.73 (0.79)	-0.10 (-0.07)	0.29 (0.05)	-0.07 (-0.78)	-0.06 (-0.44)	3.42 (2.24)	0.53 (0.45)	0.05 (1.36)
9 Credit Spread	0.09 (1.20)	0.03 (7.03)	-0.01 (-2.96)	-0.01 (-0.09)	-0.03 (-0.69)	0.19 (1.29)	-0.00 (-1.10)	-0.01 (-2.37)	0.88 (20.48)	0.07 (2.04)	-0.00 (-2.53)
10 Term Spread	0.26 (1.20)	-0.02 (-1.27)	-0.00 (-0.49)	-0.08 (-0.45)	1.12 (9.80)	-5.19 (-11.90)	-0.00 (-0.59)	0.01 (0.54)	0.25 (2.01)	-0.61 (-6.14)	0.01 (2.92)
11 Div. Yield	-4.18 (-0.93)	-0.19 (-0.68)	-0.06 (-0.32)	5.96 (1.62)	2.13 (0.91)	4.19 (0.47)	0.20 (1.44)	0.11 (0.52)	-1.68 (-0.65)	3.17 (1.57)	0.67 (9.90)

The table yields the estimated lagged-coefficient matrix *A* of the VAR model on log-returns. t-stats are given in parentheses. Data is from Q1 1973 through Q4 2007.

**Table 10**  
Stand-alone hedgers - ALM indicators

---



---

Panel A: Mean funding ratio

Horizon	TIPS	Bonds	Stocks	Commodities	Real Estate
3	1.00	1.04	1.16	1.08	1.20
7	1.00	1.08	1.37	1.18	1.51
10	1.00	1.10	1.55	1.26	1.82
15	1.00	1.12	1.84	1.40	2.47
20	1.00	1.13	2.15	1.55	3.40
30	1.00	1.16	3.03	1.89	6.59

---



---

Panel B: Probability of shortfall (FR<1.0)

Horizon	TIPS	Bonds	Stocks	Commodities	Real Estate
3	0.00	46.72	37.24	41.96	37.30
7	0.00	45.48	31.22	37.42	30.38
10	0.00	44.96	27.22	34.64	27.48
15	0.00	43.74	21.20	32.70	23.30
20	0.00	42.18	16.02	29.18	19.26
30	0.00	38.04	9.70	25.34	14.86

---



---

Panel C: Probability of severe shortfall (FR<0.9)

Horizon	TIPS	Bonds	Stocks	Commodities	Real Estate
3	0.00	26.30	25.78	26.56	26.48
7	0.00	32.28	23.24	26.20	23.80
10	0.00	33.20	21.20	25.32	22.54
15	0.00	31.38	16.14	25.12	19.04
20	0.00	31.22	12.52	22.38	16.32
30	0.00	26.46	7.40	20.42	12.96

---



---

Liability hedging capacity is examined for various assets. Mean funding ratios and shortfall probabilities (in percent) for various investment horizons (in years) and based on 5,000 simulated scenarios are given.

**Table 11**  
Enhanced LHP - ALM indicators

Panel A: Mean funding ratio											
Horizon	Allocation to AI (in %)										
	0	5	10	15	20	25	30	35	40	45	50
3	1.00	1.01	1.01	1.02	1.02	1.03	1.04	1.04	1.05	1.05	1.06
7	1.00	1.01	1.03	1.04	1.06	1.07	1.09	1.10	1.11	1.13	1.14
10	1.00	1.02	1.04	1.06	1.09	1.11	1.13	1.15	1.17	1.19	1.22
15	1.00	1.04	1.07	1.11	1.14	1.18	1.22	1.25	1.29	1.33	1.36
20	1.00	1.05	1.11	1.16	1.22	1.27	1.33	1.38	1.44	1.49	1.55
30	1.00	1.11	1.22	1.33	1.44	1.55	1.66	1.77	1.88	1.99	2.10

Panel B: Probability of shortfall (FR<1.0)											
Horizon	Allocation to AI (in %)										
	0	5	10	15	20	25	30	35	40	45	50
3	0.00	32.78	32.78	32.78	32.78	32.78	32.78	32.78	32.78	32.78	32.78
7	0.00	22.30	22.30	22.30	22.30	22.30	22.30	22.30	22.30	22.30	22.30
10	0.00	17.48	17.48	17.48	17.48	17.48	17.48	17.48	17.48	17.48	17.48
15	0.00	12.98	12.98	12.98	12.98	12.98	12.98	12.98	12.98	12.98	12.98
20	0.00	9.08	9.08	9.08	9.08	9.08	9.08	9.08	9.08	9.08	9.08
30	0.00	5.20	5.20	5.20	5.20	5.20	5.20	5.20	5.20	5.20	5.20

Panel C: Probability of severe shortfall (FR<0.9)											
Horizon	Allocation to AI (in %)										
	0	5	10	15	20	25	30	35	40	45	50
3	0.00	0.00	0.00	0.00	0.00	0.10	0.56	1.84	3.28	4.42	5.84
7	0.00	0.00	0.00	0.00	0.08	0.44	1.48	2.68	3.88	5.00	6.06
10	0.00	0.00	0.00	0.00	0.10	0.56	1.58	2.56	3.48	4.32	5.36
15	0.00	0.00	0.00	0.00	0.24	0.78	1.62	2.28	3.10	3.72	4.20
20	0.00	0.00	0.00	0.00	0.16	0.52	0.94	1.56	2.10	2.60	3.10
30	0.00	0.00	0.00	0.00	0.20	0.46	0.76	0.98	1.26	1.64	1.92

Liability hedging capacity is examined for portfolios made up of the LHP (TIPS) and the alternative investment (AI) portfolio of commodities and real estate that maximizes the correlation with TIPS (see Figure 4). Mean funding ratios and shortfall probabilities (in percent) for various investment horizons (in years) and based on 5,000 simulated scenarios are given.

**Table 12**  
Global portfolio (LHP+PSP) - ALM indicators

---



---

Panel A: Mean funding ratio

Horizon	Allocation to PSP (in %)										
	0	5	10	15	20	25	30	35	40	45	50
3	1.00	1.00	1.01	1.01	1.02	1.02	1.03	1.03	1.04	1.04	1.05
7	1.00	1.01	1.03	1.04	1.05	1.06	1.08	1.09	1.10	1.12	1.13
10	1.00	1.02	1.04	1.06	1.08	1.09	1.11	1.13	1.15	1.17	1.19
15	1.00	1.03	1.05	1.08	1.10	1.13	1.16	1.18	1.21	1.23	1.26
20	1.00	1.03	1.06	1.10	1.13	1.16	1.19	1.22	1.26	1.29	1.32
30	1.00	1.04	1.08	1.12	1.16	1.21	1.25	1.29	1.33	1.37	1.41

---



---

Panel B: Probability of shortfall (FR<1.0)

Horizon	Allocation to PSP (in %)										
	0	5	10	15	20	25	30	35	40	45	50
3	0.00	38.00	38.00	38.00	38.00	38.00	38.00	38.00	38.00	38.00	38.00
7	0.00	32.34	32.34	32.34	32.34	32.34	32.34	32.34	32.34	32.34	32.34
10	0.00	29.38	29.38	29.38	29.38	29.38	29.38	29.38	29.38	29.38	29.38
15	0.00	23.62	23.62	23.62	23.62	23.62	23.62	23.62	23.62	23.62	23.62
20	0.00	19.20	19.20	19.20	19.20	19.20	19.20	19.20	19.20	19.20	19.20
30	0.00	12.94	12.94	12.94	12.94	12.94	12.94	12.94	12.94	12.94	12.94

---



---

Panel C: Probability of severe shortfall (FR<0.9)

Horizon	Allocation to PSP (in %)										
	0	5	10	15	20	25	30	35	40	45	50
3	0.00	0.00	0.00	0.00	0.02	0.22	1.24	3.04	5.14	6.90	8.70
7	0.00	0.00	0.00	0.00	0.66	2.86	4.96	7.76	10.28	12.12	14.04
10	0.00	0.00	0.00	0.06	1.06	3.18	6.40	8.64	10.82	12.66	14.02
15	0.00	0.00	0.00	0.04	1.06	2.92	4.82	6.66	7.88	9.30	10.76
20	0.00	0.00	0.00	0.02	0.38	1.60	3.40	4.62	5.92	6.90	7.88
30	0.00	0.00	0.00	0.00	0.10	0.78	1.70	2.60	3.56	4.34	4.92

---



---

Liability hedging capacity is examined for portfolios made up of the LHP (TIPS) and the PSP (stocks and bonds, according to the allocation that maximizes sharpe ratio (see Figure 5)). Mean funding ratios and shortfall probabilities (in percent) for various investment horizons (in years) and based on 5,000 simulated scenarios are given.

**Table 13**  
Global portfolio (enhanced LHP+PSP) - ALM indicators

Panel A: Mean funding ratio											
Horizon	Allocation to PSP (in %)										
	0	5	10	15	20	25	30	35	40	45	50
3	1.01	1.02	1.02	1.02	1.03	1.03	1.04	1.04	1.04	1.05	1.05
7	1.03	1.04	1.05	1.06	1.07	1.09	1.10	1.11	1.12	1.13	1.14
10	1.04	1.06	1.08	1.09	1.11	1.13	1.14	1.16	1.18	1.19	1.21
15	1.07	1.09	1.12	1.14	1.16	1.18	1.21	1.23	1.25	1.27	1.29
20	1.11	1.14	1.16	1.19	1.22	1.24	1.27	1.30	1.32	1.35	1.37
30	1.22	1.25	1.28	1.31	1.34	1.37	1.40	1.43	1.46	1.49	1.52

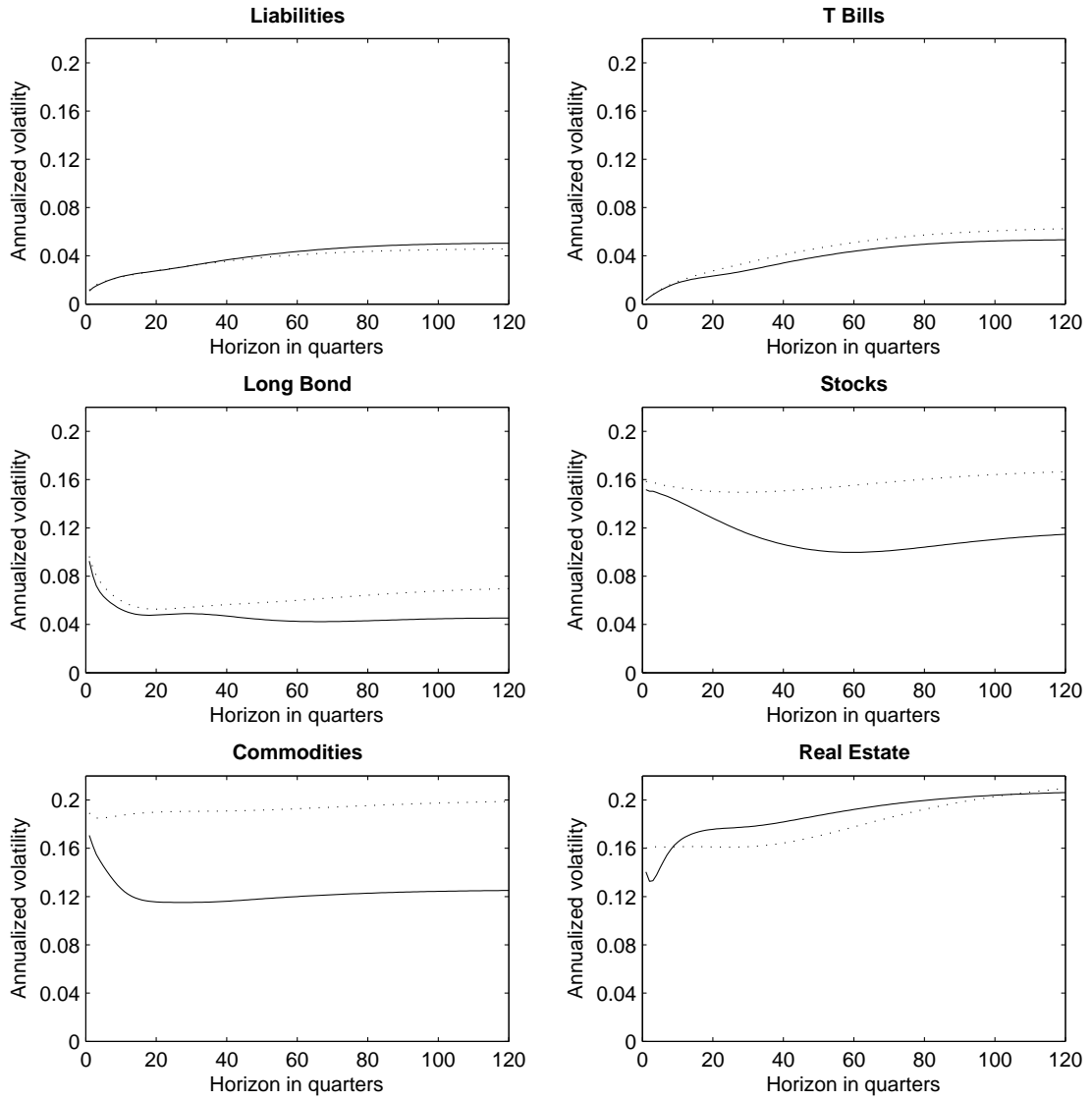
Panel B: Probability of shortfall (FR<1.0)											
Horizon	Allocation to PSP (in %)										
	0	5	10	15	20	25	30	35	40	45	50
3	32.78	31.70	32.28	33.70	34.60	35.32	36.08	36.32	36.58	36.88	37.04
7	22.30	21.04	22.84	24.66	26.34	27.36	28.44	29.36	29.90	30.28	30.66
10	17.48	16.18	18.20	20.28	21.98	23.14	24.06	25.12	26.04	26.60	27.04
15	12.98	10.80	12.02	13.50	14.98	16.02	17.12	18.00	18.70	19.20	20.02
20	9.08	7.32	7.70	8.82	9.90	11.22	12.28	13.10	13.84	14.54	15.34
30	5.20	3.44	3.64	3.86	4.60	5.30	5.92	6.72	7.34	8.08	8.88

Panel C: Probability of severe shortfall (FR<0.9)											
Horizon	Allocation to PSP (in %)										
	0	5	10	15	20	25	30	35	40	45	50
3	0.00	0.00	0.00	0.02	0.16	0.74	1.98	3.60	5.50	7.30	8.82
7	0.00	0.00	0.02	0.16	1.02	2.72	4.80	7.12	9.52	11.32	13.30
10	0.00	0.00	0.02	0.30	1.46	3.26	5.02	7.22	9.38	10.88	12.56
15	0.00	0.00	0.00	0.32	1.14	2.14	3.40	4.84	6.24	7.74	8.94
20	0.00	0.00	0.02	0.16	0.46	1.00	1.76	2.90	4.10	5.20	6.08
30	0.00	0.00	0.00	0.00	0.14	0.20	0.56	1.18	1.72	2.40	2.92

Liability hedging capacity is examined for portfolios made up of the LHP (TIPS) enhanced by 10% of alternative investments according to Figure 4 and the PSP (stocks and bonds) according to the allocation that maximizes sharpe ratio (see Figure 5)). Mean funding ratios and shortfall probabilities (in percent) for various investment horizons (in years) and based on 5,000 simulated scenarios are given.

**Figure 1**  
Annualized volatilities

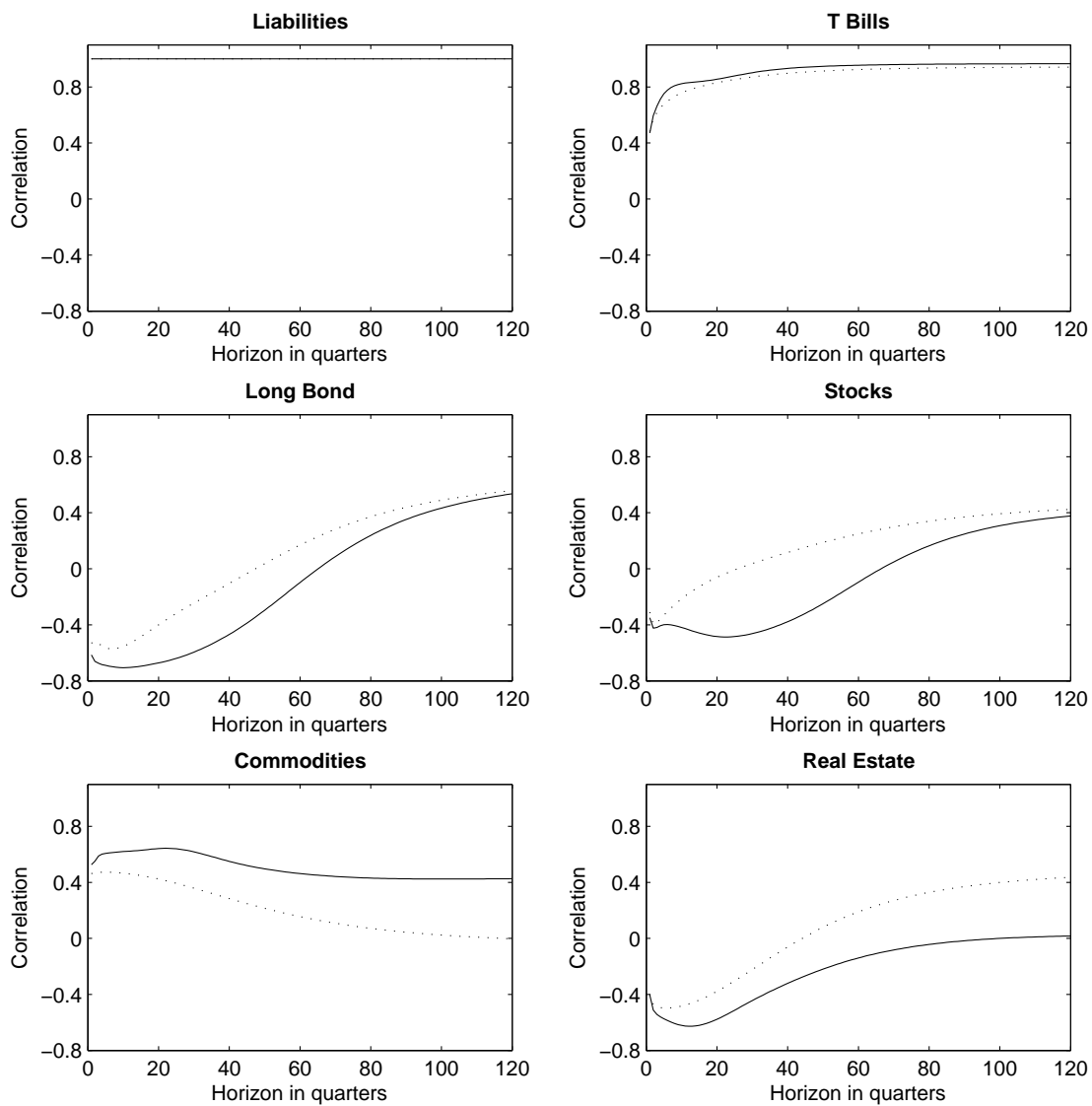



---

Annualized volatilities for asset and liability returns for various horizons are displayed. Dotted lines correspond to VAR-implied volatilities and solid lines to VECM-implied volatilities.

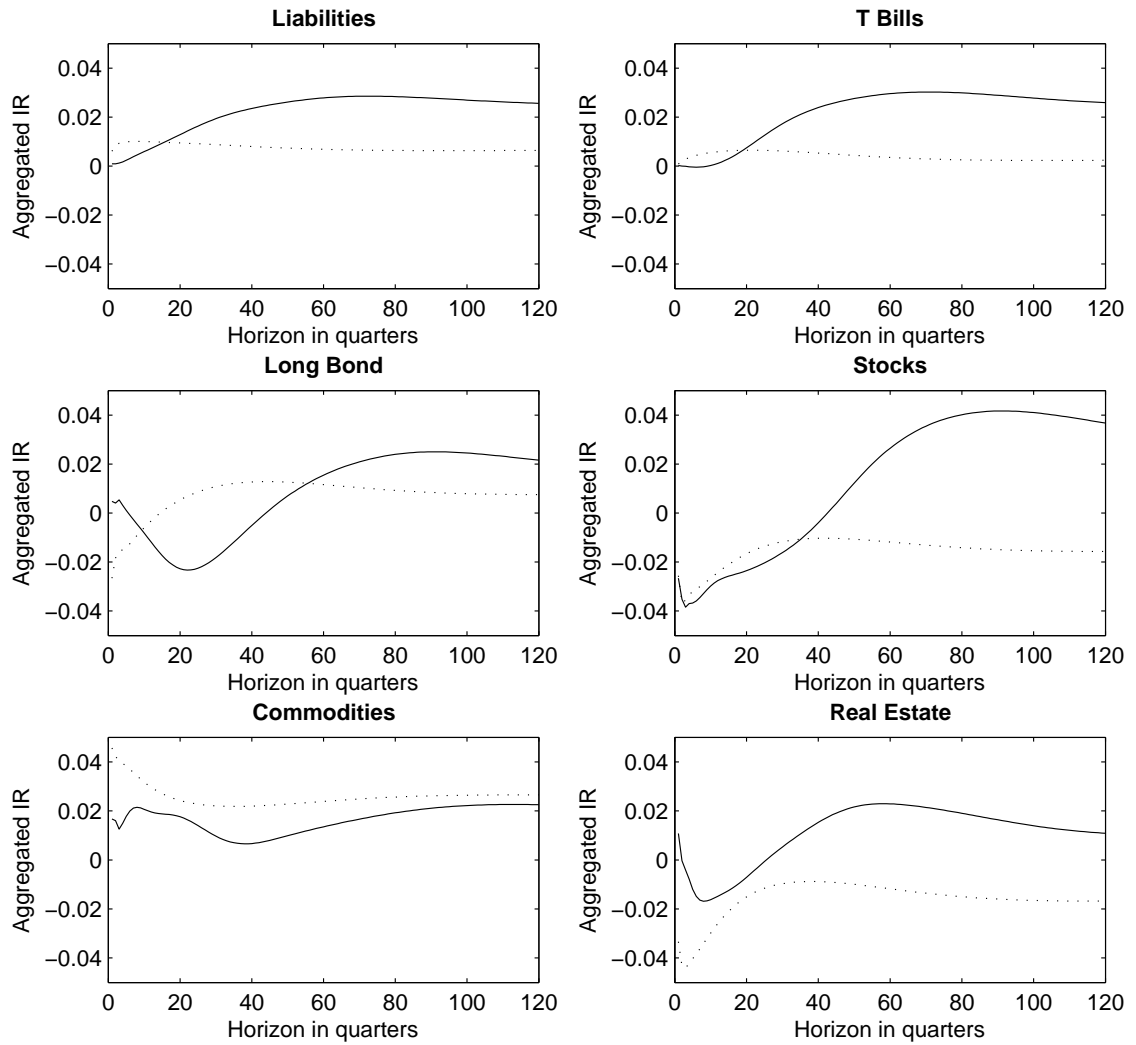


**Figure 2**  
Correlation between liabilities and asset returns



Correlation coefficients between different asset returns and liability returns for various horizons are displayed. Dotted lines correspond to VAR-implied correlations and solid lines to VECM-implied correlations.

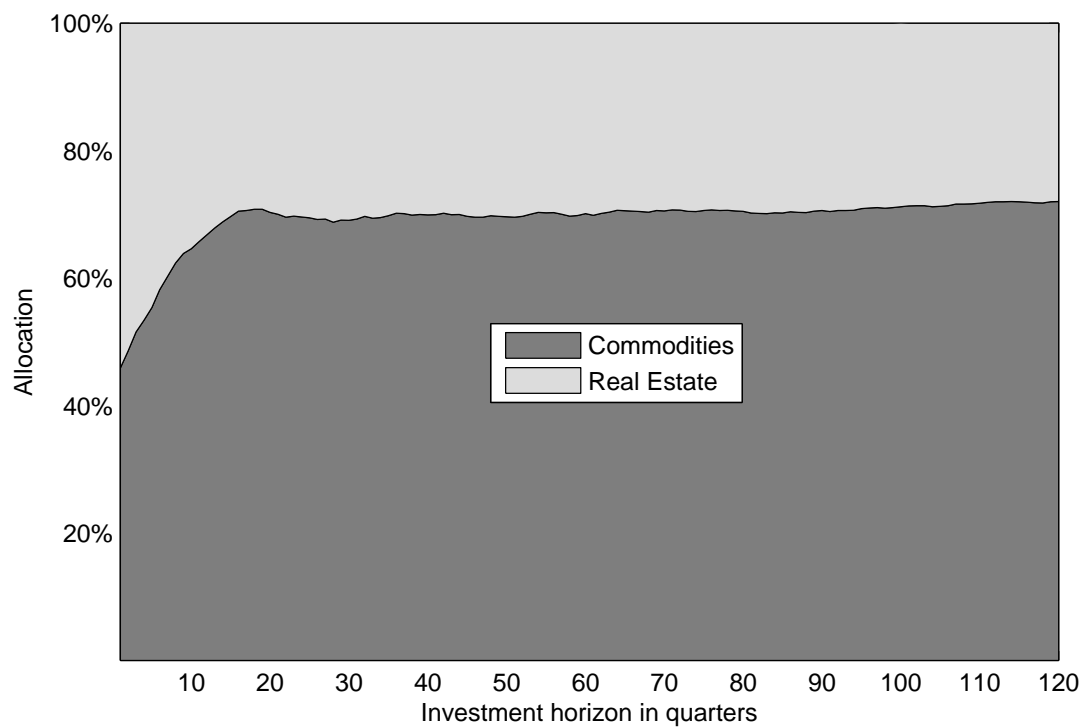
**Figure 3**  
 Aggregated responses to a structural liability shock




---

Aggregated impulse responses correspond to first column elements of matrices calculated via (15). Dotted lines correspond to VAR-implied correlations and solid lines to VECM-implied correlations.

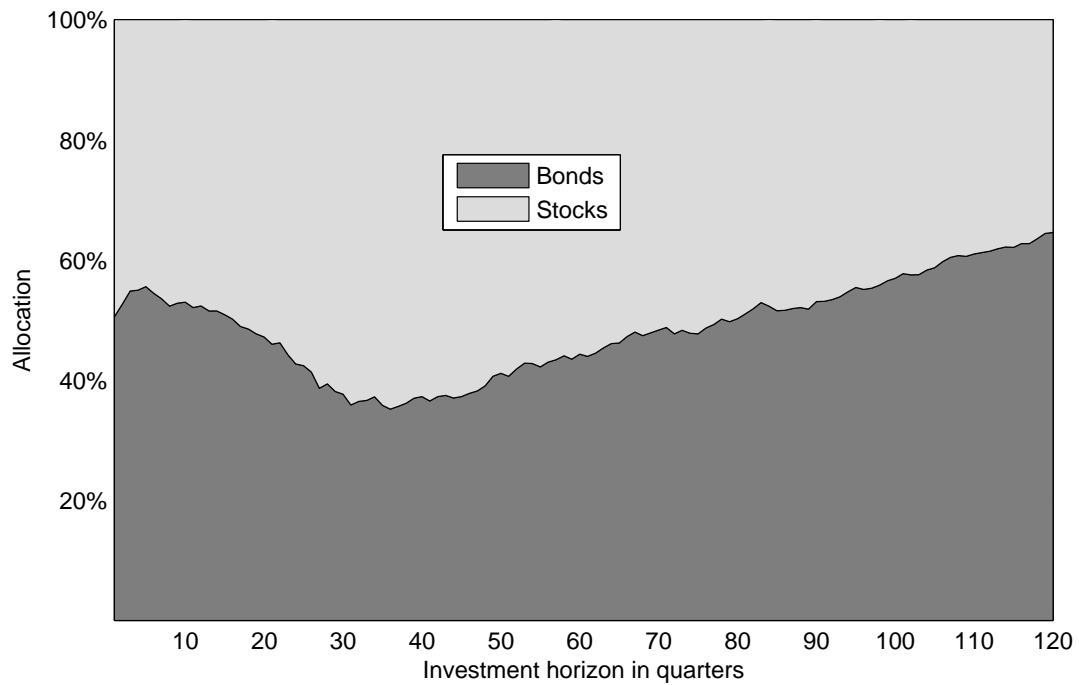
**Figure 4**  
Alternative LHP enhancers



---

The allocations correspond to the ones that minimize the tracking error with the TIPS, defined as the standard deviation between the portfolio and the TIPS return, for a given investment horizon. Optimization is based on the 5,000 simulated scenarios.

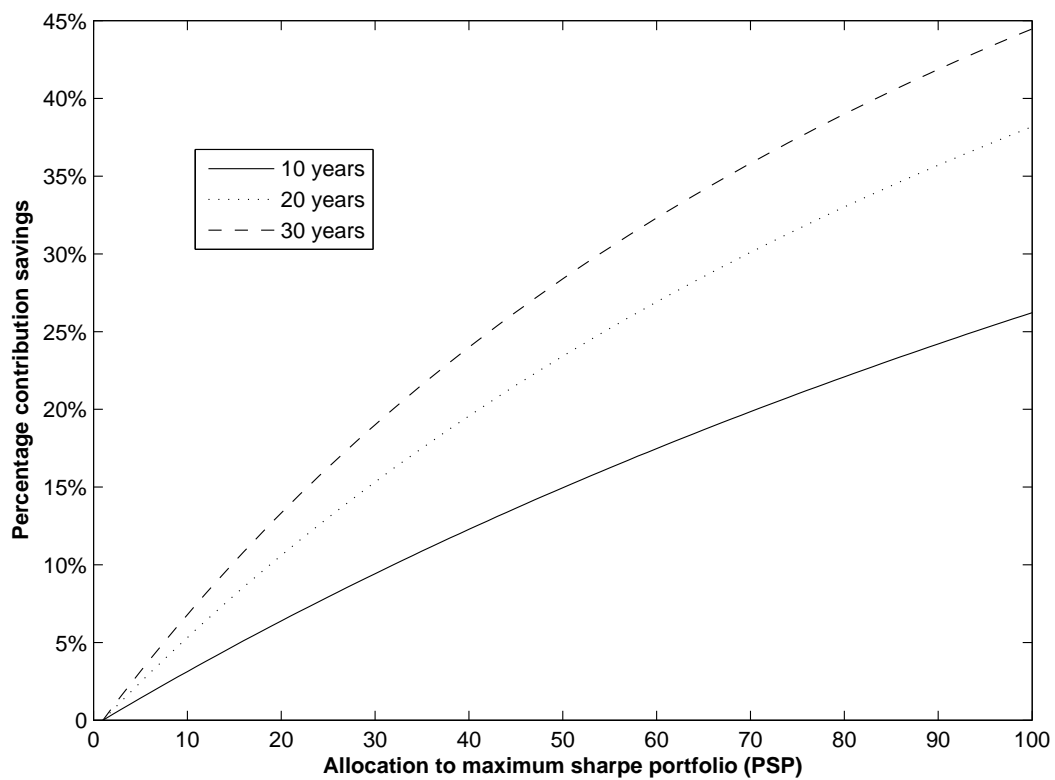
**Figure 5**  
The PSP - Maximum Sharpe ratio allocation



---

The displayed allocations maximize the Sharpe ratio for a given investment horizon with the investment universe of stocks and bonds. The risk free rate has been modeled through T-Bills returns. Optimization is based on the 5,000 simulated scenarios.

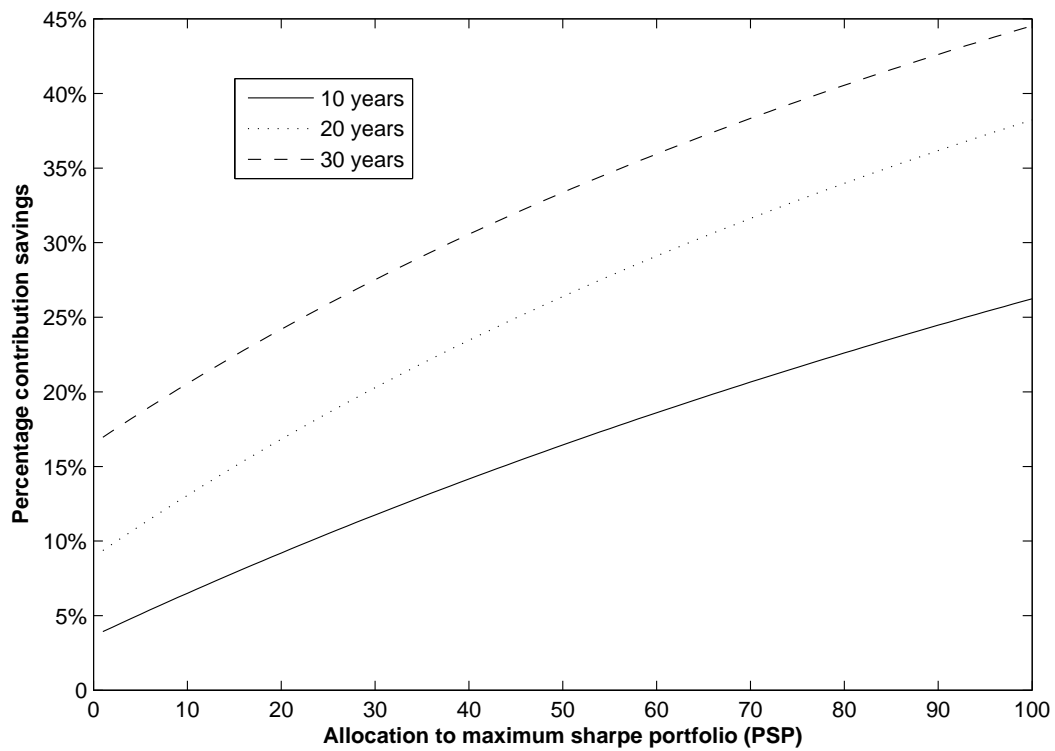
**Figure 6**  
Contribution savings through introduction of a PSP



---

Contribution saving is defined as the potential reduction of initial investment when deviating from the perfect liability matching portfolio such that, on average, the pension plan is fully funded. Numbers are based on 5,000 simulated scenarios. The PSP contains stocks and bonds in proportions that depend on the investment horizon (see Figure 5).

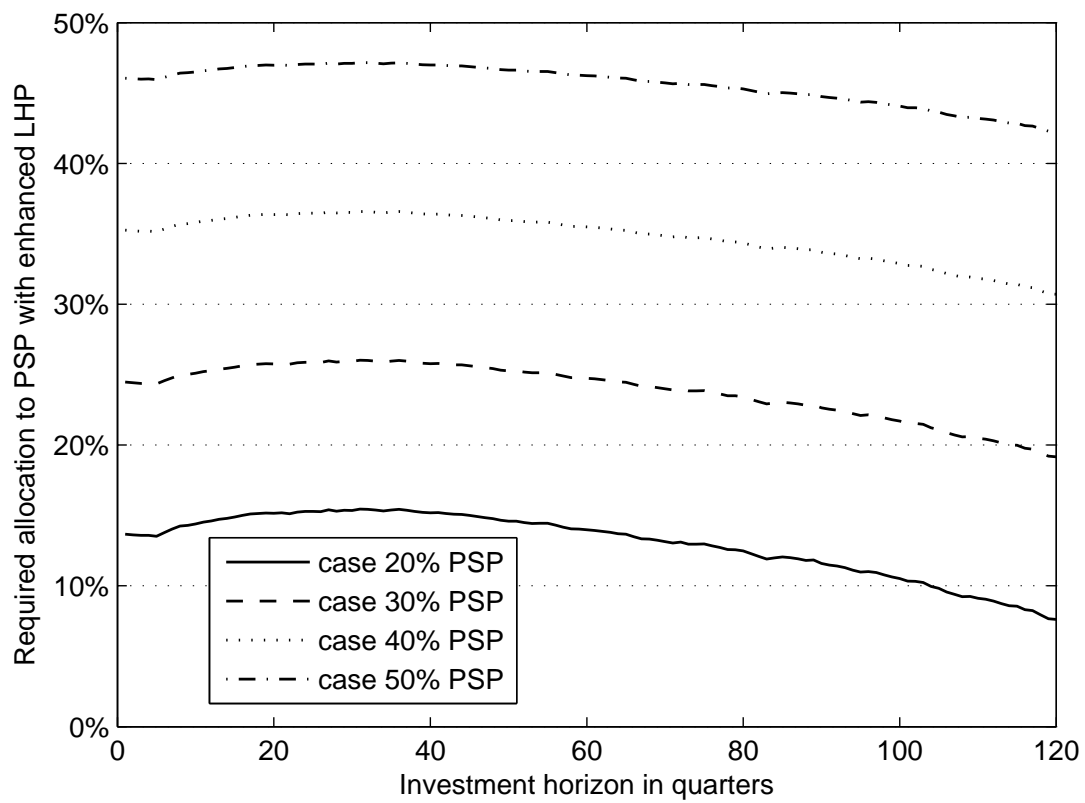
**Figure 7**  
Contribution savings through enhanced LHP



---

Contribution saving is defined as the potential reduction of initial investment when deviating from the perfect liability matching portfolio such that, on average, the pension plan is fully funded. Numbers are based on 5,000 simulated scenarios. The alternative investment (AI) portfolio contains commodities and real estate in proportions that depend on the investment horizon (see Figure 4).

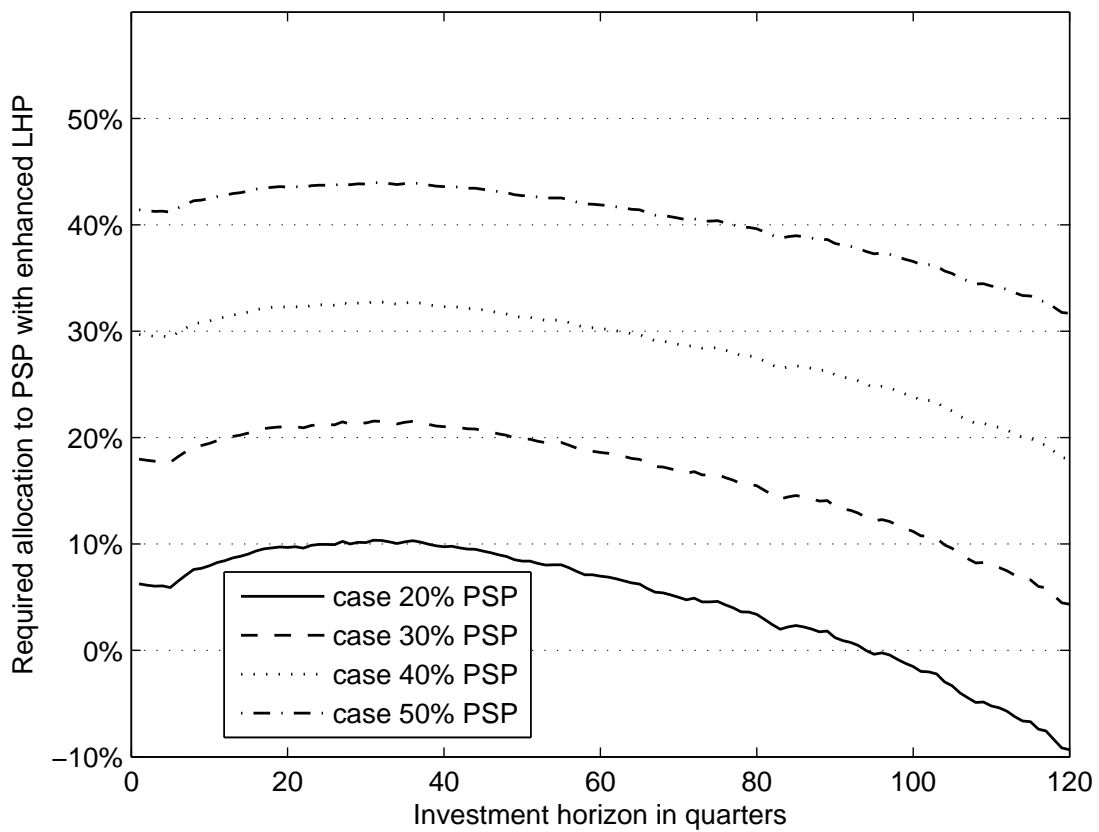
**Figure 8**  
Return equivalents with 5% AI - PSP allocation reduction



The graphs shows the impact of enhancing the LHP beyond TIPS. The enhanced LHP consists of 95% TIPS and 5% alternative investments (see Figure 4). The graph yields the required allocations to the PSP so as to obtain on average the same amount of return as in the case of the traditional LHP (TIPS). Various non-enhanced portfolios are taken as benchmarks  $((1 - \omega) \cdot \text{TIPS} + \omega \cdot \text{PSP}, \omega \in \{20\%, 30\%, 40\%, 50\%\})$ .

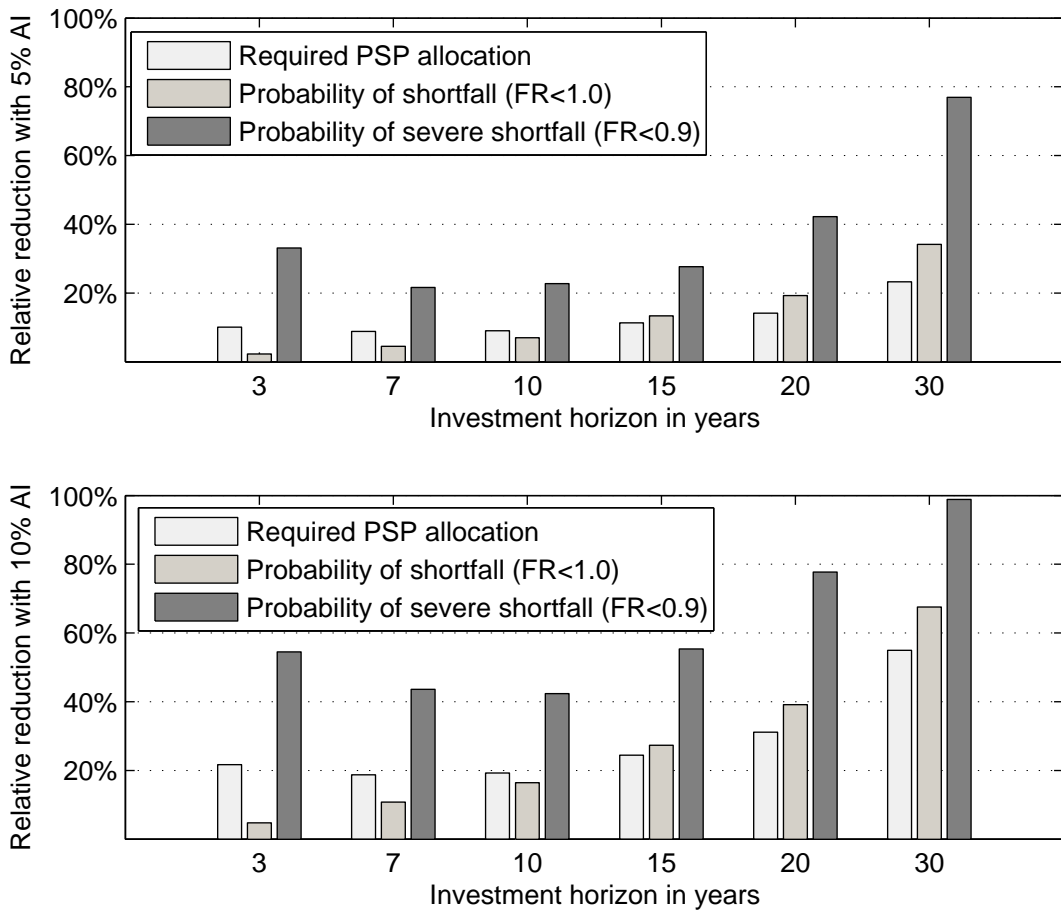


**Figure 9**  
Return equivalents with 10% AI - PSP allocation reduction



The graphs shows the impact of enhancing the LHP beyond TIPS. The enhanced LHP consists of 90% TIPS and 10% alternative investments (see Figure 4). The graph yields the required allocations to the PSP so as to obtain on average the same amount of return as in the case of the traditional LHP (TIPS). Various non-enhanced portfolios are taken as benchmarks  $((1 - \omega) \cdot \text{TIPS} + \omega \cdot \text{PSP}, \omega \in \{20\%, 30\%, 40\%, 50\%\})$ .

**Figure 10**  
Risk reduction through LHP enhancements



The graphs show the impact of enhancing the LHP beyond TIPS on various risk parameters. We considered the base case of an investment of 40% in the PSP and 60% in the traditional LHP and compared this portfolio to the case where the LHP is enhanced by 5%, respectively 10% of alternative assets (AI, i.e. estate and commodities). Enhanced and traditional portfolios are linked such that the portfolios exhibit the same mean funding ratios.

Especially for real assets, a method of separating the long-run movements from any short-run ones is necessary. Therefore, many studies have employed cointegration techniques to test for the existence of any longrun equilibrium relationship between inflation and asset returns. In order to compare the inflation-hedging characteristics of both real and financial assets in Hong Kong during an eleven-year period (from 1984-94), the quarterly data was subjected to analysis using both the Fama and Schwert framework and cointegration techniques. The study concludes that real assets in general are no Asset Liability Management: An Overview Page 4. by structuring the portfolios of assets and liabilities to change equally in value whenever the interest rate changes. If DGAP is close to zero, the market value of the bank's equity will not change and, accordingly, become immunised to any changes in interest rates. In addition to providing an alternative route for asset/liability restructuring, securitisation may also be viewed as a form of direct financing in which savers are directly lending to borrowers. Securitisation also provides the additional advantage of cleansing the balance sheet of complex and highly illiquid assets as long as the transformations required to enhance marketability are available on a cost-effective basis.